

TECHNICAL MANUAL

**ORGANIZATIONAL, DIRECT SUPPORT AND
GENERAL SUPPORT MAINTENANCE REPAIR
PARTS AND SPECIAL TOOLS LIST**

**REPRODUCTION SET
DIAZO PROCESS 185.FL-M
(NSN 3610-01-123-7782)**

Approved for public release; distribution is unlimited.

*This manual supersedes TM 5-3610-256-24p, 28 September 1984, including all changes.

HEADQUARTERS, DEPARTMENT OF THE ARMY

10 AUGUST 1990

TECHNICAL MANUAL

NO. 5-3610-256-24P

HEADQUARTERS
DEPARTMENT OF THE ARMY
WASHINGTON, D. C., 10 August 1990

Organizational, Direct Support and
General Support Maintenance
Repair Parts and Special Tools List

REPRODUCTION SET, DIAZO PROCESS
185.FL-M (NSN 3610-01-1 23-7782)

Current as of 19 January 1990

REPORTING ERRORS AND RECOMMENDING IMPROVEMENTS

You can help improve this manual. If you find an mistake or if you know of a way to improve the procedures, please let us know. Mail your letter, DA Form 2028 (Recommended Changes to Publications and Blank Forms), or DA Form 2028-2 located in the back of this manual direct to: Commander, U.S. Army Troop Support Command, ATTN: AMSTR-MCTS, 4300 Goodfellow Boulevard, St. Louis, MO 63120-1798. A reply will be furnished directly to you.

Approved for public release; distribution is unlimited.

TABLE OF CONTENTS

	Page	Illus. figure
Section I. INTRODUCTION	1	
Section II. REPAIR PARTS LIST	1-1	
Group 01. Electrical Components	1-1	1
Group 02. Ammonia Supply System	2-1	2
Group 03. Printer Assembly	3-1	3
Group 04. Developer Assembly	4-1	4
Group 05. Machine Cabinet Group	5-1	5
Group 06. Carrying Case Assembly	6-1	6
Group 07. Supply Case Assembly	7-1	7
Section III. SPECIAL TOOLS LIST	8-1	
Group 08. Special Tools	8-1	8
Section IV. CROSS-REFERENCE INDEXES		
National Stock Number Index	I-1	
Part Number Index	I-2	
Figure and Item Number Index	I-11	

*This manual supersedes TM 5-3610-256-24P, 28 September 1984, including all changes.

**ORGANIZATIONAL, DIRECT SUPPORT, AND
GENERAL SUPPORT MAINTENANCE
REPAIR PARTS AND SPECIAL TOOLS LIST**

Section I. INTRODUCTION

1. Scope. This RPSTL lists and authorizes spares and repair parts; special tools; special test, measurement, and diagnostic equipment (TMDE); and other special support equipment required for performance of organizational, direct support, and general support maintenance of the Reproduction Set. It authorizes the requisitioning, issue, and disposition of spares, repair parts and special tools as indicated by the source, maintenance and recoverability (SMR) codes.

2. General. In addition to this section, Introduction, this Repair Parts and Special Tools List is divided into the following sections.

a. Section II. Repair Parts List. A list of spares and repair parts authorized by this RPSTL for use in the performance of maintenance. The list also includes parts which must be removed for replacement of the authorized parts. Parts lists are composed of functional groups in ascending alphanumeric sequence, with the parts in each group listed in ascending figure and item number sequence. Bulk materials are listed in item name sequence. Repair parts kits are listed separately in their own functional group within Section II. Repair parts for repairable special tools are also listed in this section. Items listed are shown on the associated illustration(s)/figures(s).

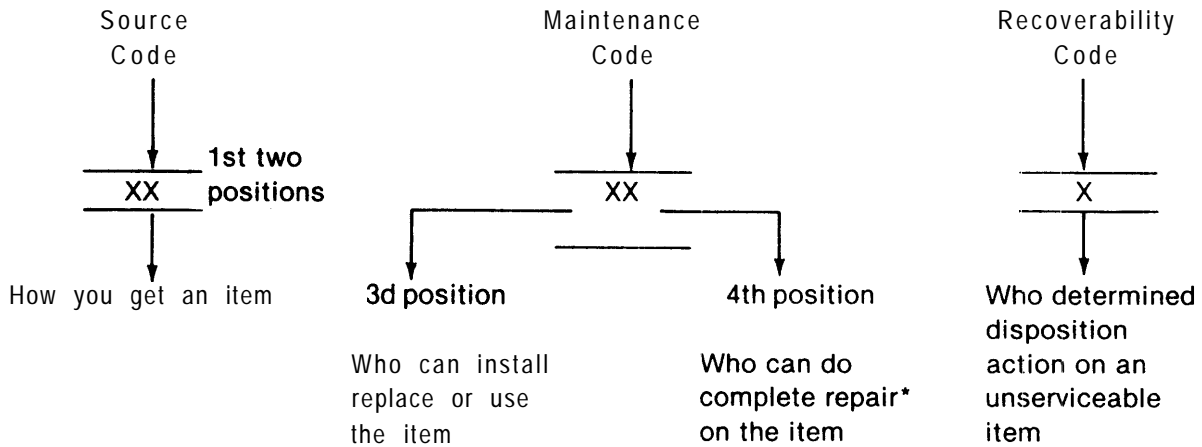
b. Section III. Special Tools List. A list of special tools, special TMDE, and other special support equipment authorized by this RPSTL (as indicated by Basis of Issue (BOI) information in DESCRIPTION AND USABLE ON CODE column) for the performance of maintenance.

c. Section IV. National Stock Number and Part Number Index. A list, in National item identification number (NIIN) sequence, of all National stock numbered items appearing in the listing, followed by a list in alphanumeric sequence of all part numbers appearing in the listings. National stock numbers and part numbers are cross-referenced to each illustration figure and item number appearance.

3. Explanation of Columns (Sections II and III).

a. ITEM NO. (Column (1)). Indicates the number used to identify items called out in the illustration.

b. SMR CODE (Column (2)). The Source, Maintenance, and Recoverability (SMR) code is a 5-position code containing supply/requisitioning information, maintenance category authorization criteria, and disposition instruction, as shown in the following breakout:



● **Complete Repair:** Maintenance capacity, capability, and authority to perform all corrective maintenance tasks of the "Repair" function in a use/user environment in order to restore serviceability to a failed item.

(1) Source Code. The source code tells you how to get an item needed for maintenance, repair, or overhaul of an end item/equipment. Explanations of source codes follows:

Code

PB
PC**
PD
PE
PF
PG

Explanation

Stocked items; use the applicable NSN to request/requisition items with these source codes. They are authorized to the category indicated by the code entered in the 3d position of the SMR code.

**NOTE: Items coded PC are subject to deterioration.

KD
KF
KB

Items with these codes are not to be requested/requisitioned individually. They are part of a kit which is authorized to the maintenance category indicated in the 3d position of the SMR code. The complete kit must be requisitioned and applied.

Explanation

MO - (Made at org/
AVUM Level)
MF - (Made at DS/
AVUM Level)
MH - (Made at GS
Level)
ML - (Made at Spe-
cialized Repair
Act (SRA))
MD - (Made at Depot)

Items with these codes are not to be requested/requisitioned individually. They must be made from bulk material which is identified by the part number in the DESCRIPTION and USABLE ON CODE (UOC) column and listed in the Bulk Material group of the repair parts list in this RPSTL. If the item is authorized to you by the 3d position code of the SMR code, but the source code indicates it is made at a higher level, order the item from the higher level of maintenance.

Code	Explanation
AO - (Assembled by org/AVUM Level)	Items with these codes are not to be requested/requisitioned individually. The parts that make up the assembled item must be requisitioned or fabricated and assembled at the level of maintenance indicated by the source code. If the 3d position code of the SMR code authorizes you to replace the item, but the source code indicates the items are assembled at a higher level, order the item from the higher level of maintenance.
AF - (Assembled by DS/AVIM Level)	
AH - (Assembled by GS Category)	
AL - (Assembled by SRA)	
AD - (Assembled by Depot)	

- XA - Do not requisition an "XA"-coded item. Order its next higher assembly. (Also, refer to the NOTE below.)
- XB - If an "XB" item is not available from salvage, order it using the FSCM and part number given.
- XG - Installation drawing, diagram, instruction sheet, field service drawing, that is identified by manufacturer's part number.
- XD - Item is not stocked. Order an "XD"-coded item through normal supply channels using the FSCM and part number given, if no NSN is available.

NOTE

Cannibalization or controlled exchange, when authorized, may be used as a source of supply for items with the above source codes, except for those source coded "XA" or those aircraft support items restricted by requirements of AR 700-42.

(2) Maintenance Code. Maintenance codes tells you the level(s) of maintenance authorized to USE and REPAIR support items. The maintenance codes are entered in the third and fourth positions of the SMR Code as follows:

(a) The maintenance code entered in the third position tells you the lowest maintenance level authorized to remove, replace, and use an item. The maintenance code entered in the third position will indicate authorization to one of the following levels of maintenance.

Code	Application/Explanation
C	-Crew or operator maintenance done within organizational or aviation unit maintenance.
O	-Organizational or aviation unit category can remove, replace, and use the item.
F	-Direct support or aviation intermediate level can remove, replace, and use the item.
H	-General support level can remove, replace, and use the item.

Code	Application/Explanation
L	-Specialized repair activity can remove, replace, and use the item.
D	-Depot level can remove, replace, and use the item.

(b) The maintenance code entered in the fourth position tells whether or not, the item is to be repaired and identifies the lowest maintenance level with the capability to do complete repair (i.e., perform all authorized repair functions.) (NOTE: Some limited repair may be done on the item at a lower level of maintenance, if authorized by the Maintenance Allocation Chart (MAC) and SMR codes.) This position will contain one of the following maintenance codes.

Code	Application/Explanation
O	-Organizational or (aviation unit) is the lowest level that can do complete repair of the item.
F	-Direct support or aviation intermediate is the lowest level that can do complete repair of the item.
H	-General support is the lowest level that can do complete repair of the item.
L	-Specialized repair activity (designate the specialized repair activity) is the lowest level that can do complete repair of the item
D	-Depot is the lowest level that can do complete repair of the item.
Z	-Nonreparable. No repair is authorized.
B	-No repair is authorized. (No parts or special tools are authorized for the maintenance of a "B" coded item). However, the item may be reconditioned by adjusting, lubricating, etc., at the user level.

(3) Recoverability Code. Recoverability codes are assigned to items to indicate the disposition action on unserviceable items. The recoverability code is entered in the fifth position of the SMR Code as follows.

Recoverability Codes	Application/Explanation
Z	-Nonreparable item. When unserviceable, condemn and dispose of the item at the level of maintenance shown in 3d position of SMR Code.
O	-Reparable item. When uneconomically reparable, condemn and dispose of the item at organizational or aviation unit level.

Recoverability Code	Application/Explanation
F	-Reparable item. When uneconomically reparable, condemn and dispose of the item at the direct support or aviation intermediate level.
H	-Reparable item. When uneconomically reparable, condemn and dispose of the item at the general support level.
D	-Reparable item. When beyond lower level repair capability, return to depot. Condemnation and disposal of item not authorized below depot level.
L	-Reparable item. Condemnation and disposal not authorized below specialized repair activity (SRA).
A	-Item requires special handling or condemnation procedures because of specific reasons (e.g., precious metal content, high dollar value, critical material, or hazardous material). Refer to appropriate manuals/directives for specific instructions.

c. FSCM (Column (3)). The Federal Supply Code for Manufacturer (FSCM) is a 5-digit numeric code which is used to identify the manufacturer, distributor, or Government agency, etc., that supplies the item.

d. PART NUMBER (Column (4)). Indicates the primary number used by the manufacturer, (individual, company, firm, corporation, or Government activity), which controls the design and characteristics of the item by means of its engineering drawings, specifications standards, and inspection requirements to identify an item or range of items.

NOTE

When you use a NSN to requisition an item, the item you receive may have a different part number from the part ordered.

e. DESCRIPTION AND USABLE ON CODE (UOC) (Column (5)). This column includes the following information:

- (1) The Federal item name and, when required, a minimum description to identify the item.
- (2) The physical security classification of the item is indicated by the parenthetical entry, e.g., Phy Sec CI - Confidential, Phy Sec CI (S) - Secret, Phy Sec CI (T) - Top Secret.
- (3) Items that are included in kits and sets are listed below the name of the kit or set.
- (4) Spare/repair parts that make up an assembled item are listed immediately following the assembled item line entry.
- (5) Part numbers for bulk materials are referenced in this column in the line item entry for the item to be manufactured/fabricated.

(6) When the item is not used with all serial numbers of the same model, the effective serial numbers are shown on the last line(s) of the description (before UOC).

(7) The usable on code, when applicable (see paragraph 5, Special Information).

(8) In the Special Tools List section, the basis of issue (BOI) appears as the last line(s) in the entry for each special tool, special TMDE, and other special support equipment. When density of equipments supported exceeds density spread indicated in the basis of issue, the total authorization is increased proportionately.

(9) The statement "END OF FIGURE" appears just below the last item description in Column 5 for a given figure in both Section II and Section III.

(10) The indenture, shown as dots appearing before the repair part, indicates that the item is a repair part of the next higher assembly.

f. QTY (Column (6)). The QTY (quantity per figure column) indicates the quantity of the item used in the breakout shown on the illustration figure, which is prepared for a functional group, subfunctiona group, or an assembly. A "V" appearing in this column in lieu of a quantity indicates that the quantity is variable and the quantity may vary from application to application.

4. Explanation of Columns (Section IV).

a. NATIONAL STOCK NUMBER (NSN) INDEX.

(1) STOCK NUMBER column. This column lists the NSN by National item identification number (NIIN) sequence. The NIIN consists of the last nine digits of the NSN i.e. NIIN (5305-01-574-1467).
NSN
NIIN
When using this column to locate an item, ignore the first 4 digits of the NSN. However, the complete NSN should be used when ordering items by stock number.

(2) FIG. column. This column lists the number of the figure where the item is identified/ located. The figures are in numerical order in Section II and Section III.

(3) ITEM column. The item number identifies the item associated with the figure listed in the adjacent FIG. column. This item is also identified by the NSN listed on the same line.

b. PART NUMBER INDEX. Part numbers in this index are listed by part number in ascending alphanumeric sequence (i.e., vertical arrangement of letter and number combination which places the first letter or digit of each group in order A through Z, followed by the numbers 0 through 9 and each following letter or digit in like order).

(1) FSCM column. The Federal Supply Code for Manufacturer (FSCM) is a 5-digit numeric code used to identify the manufacturer, distributor, or Government agency, etc., that supplies the item.

(2) PART NUMBER column. Indicates the primary number used by the manufacturer (individual, firm, corporation, or Government activity), which controls the design and characteristics of the item by means of its engineering drawings, specifications standards, and inspection requirements to identify an item or range of items.

(3) STOCK NUMBER column. This column lists the NSN for the associated part number and manufacturer identified in the PART NUMBER and FSCM columns to the left.

(4) FIG. column. This column lists the number of the figure where the item is identified/located in Sections II and III.

(5) ITEM column. The item number is that number assigned to the item as it appears in the figure referenced in adjacent figure number column.

5. Special Information. Use the following subparagraphs as applicable:

a. Usable On Code. The usable on code appears in the lower left corner of the Description column heading. Usable on codes are shown as "UOC:" in the Description Column (justified left) on the first line applicable item description/nomenclature. Uncoded items are applicable to all models.

b. Associated Publications. The publication listed below pertains to the Reproduction Set and its components.

<u>Publication</u>	<u>Short Title</u>
TM 5-3610-256-14	Reproduction Set, Diazo Process 185. FL-M

6. How to Locate Repair Parts.

a. When National Stock Number or Part Number is NOT Known.

(1) First. Using the table of contents, determine the assembly group or subassembly group to which the item belongs. This is necessary since figures are prepared for assembly groups and subassembly groups, and listings, are divided into the same groups.

(2) Second. Find the figure covering the assembly group or subassembly group to which the item belongs.

(3) Third. Identify the item on the figure and note the item number.

(4) Fourth. Refer to the Repair Parts List for the figure to find the part number for the item number noted on the figure.

(5) Fifth. Refer to the Part Number Index to find the NSN, if assigned.

b. When National Stock Number or Part Number is Known:

(1) First. Using the Index of National Stock Numbers and Part Numbers, find the pertinent National Stock Number or Part Number. The NSN index is in National Item Identification Number (NIIN) sequence (see 4a(1)). The part numbers in the Part Number index are listed in ascending alphanumeric sequence (see paragraph 4b). Both indexes cross-reference you to the illustration figure and item number of the item you are looking for.

(2) Second. After finding the figure and item number, verify that the item is the one you are looking for, then locate the item number in the repair parts list for the figure.

7. **ABBREVIATIONS.** The following abbreviations are not applicable to MIL-STD specification.

Abriviations	Explanation
Thermsw	Thermoswitch
Thru	Thrust
PH	Phillips
DRV	Driver

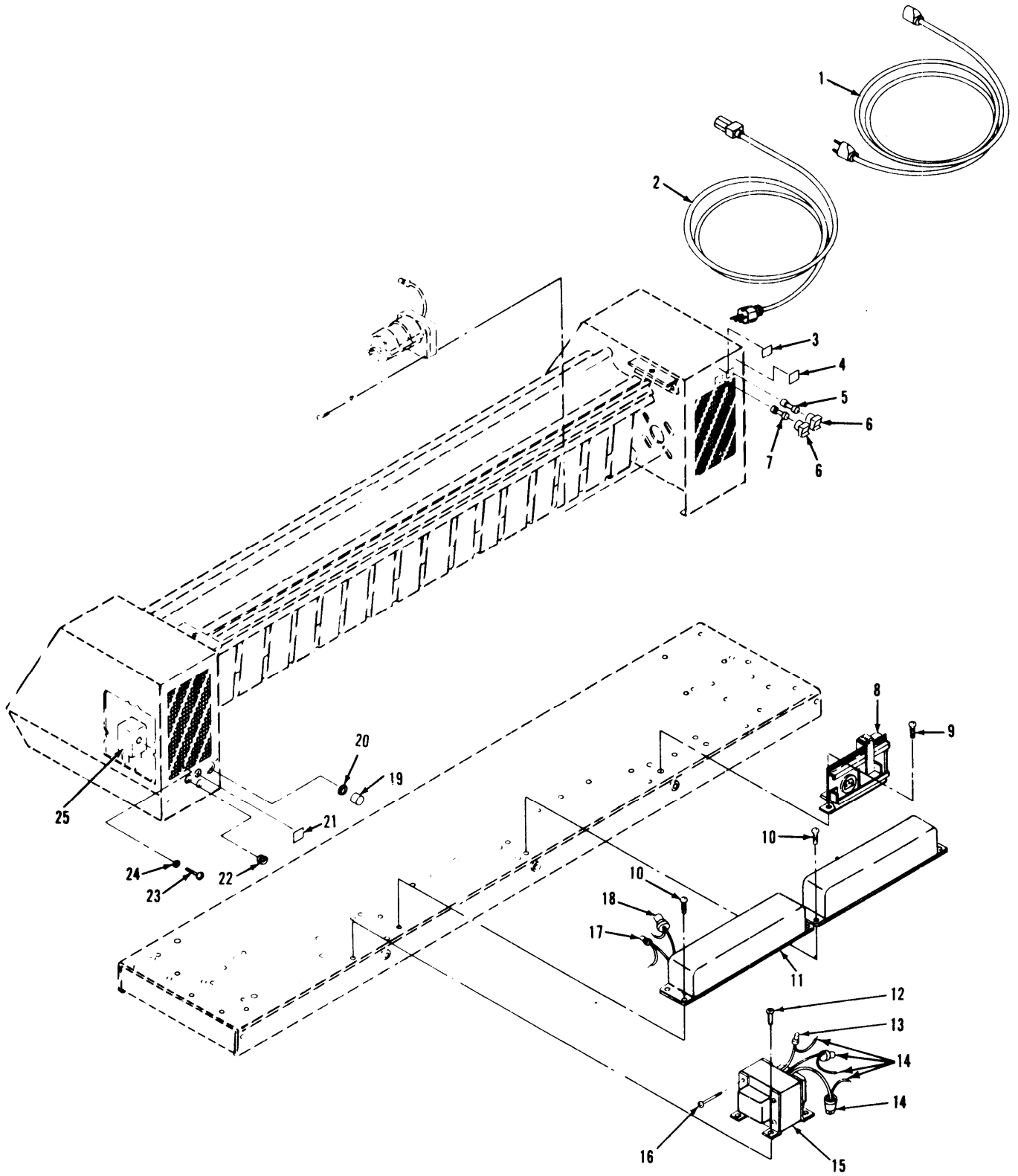


Figure 1. Electrical Components (Sheet 1 of 4)

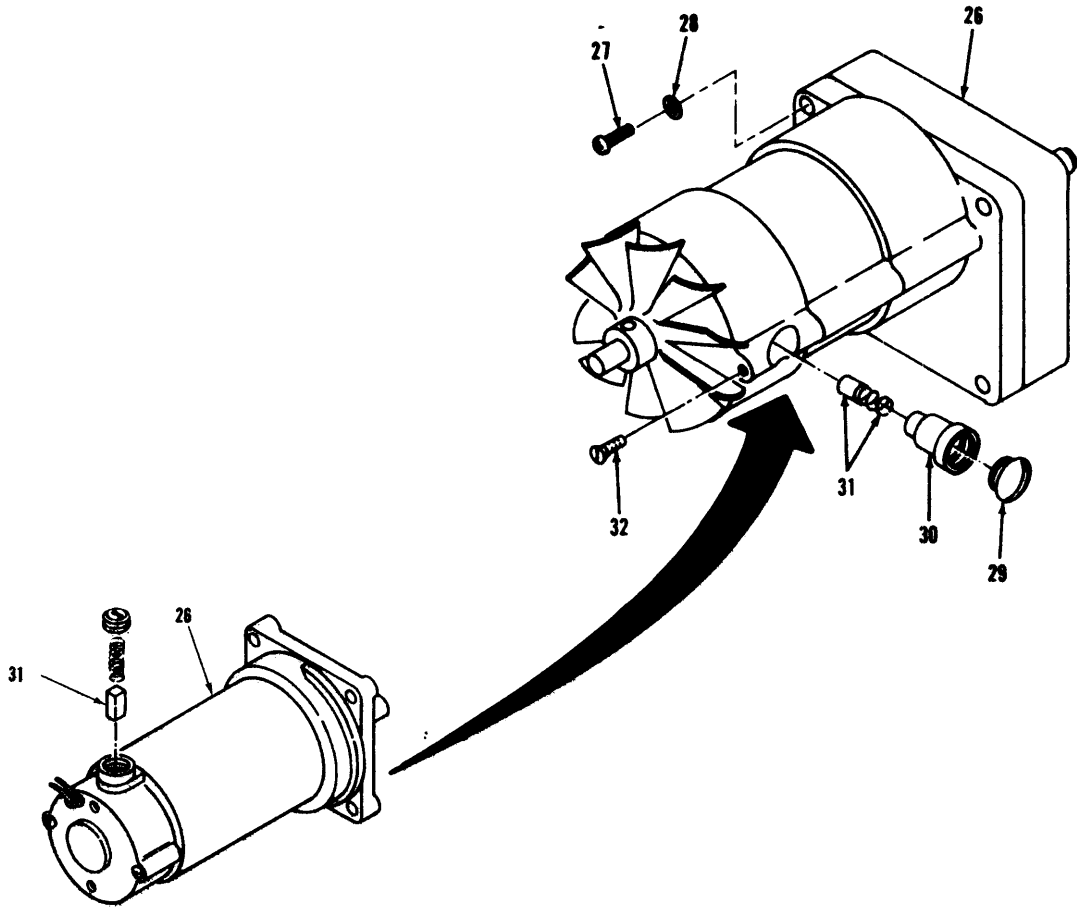


Figure 1. Electrical Components (Sheet 2 of 4)

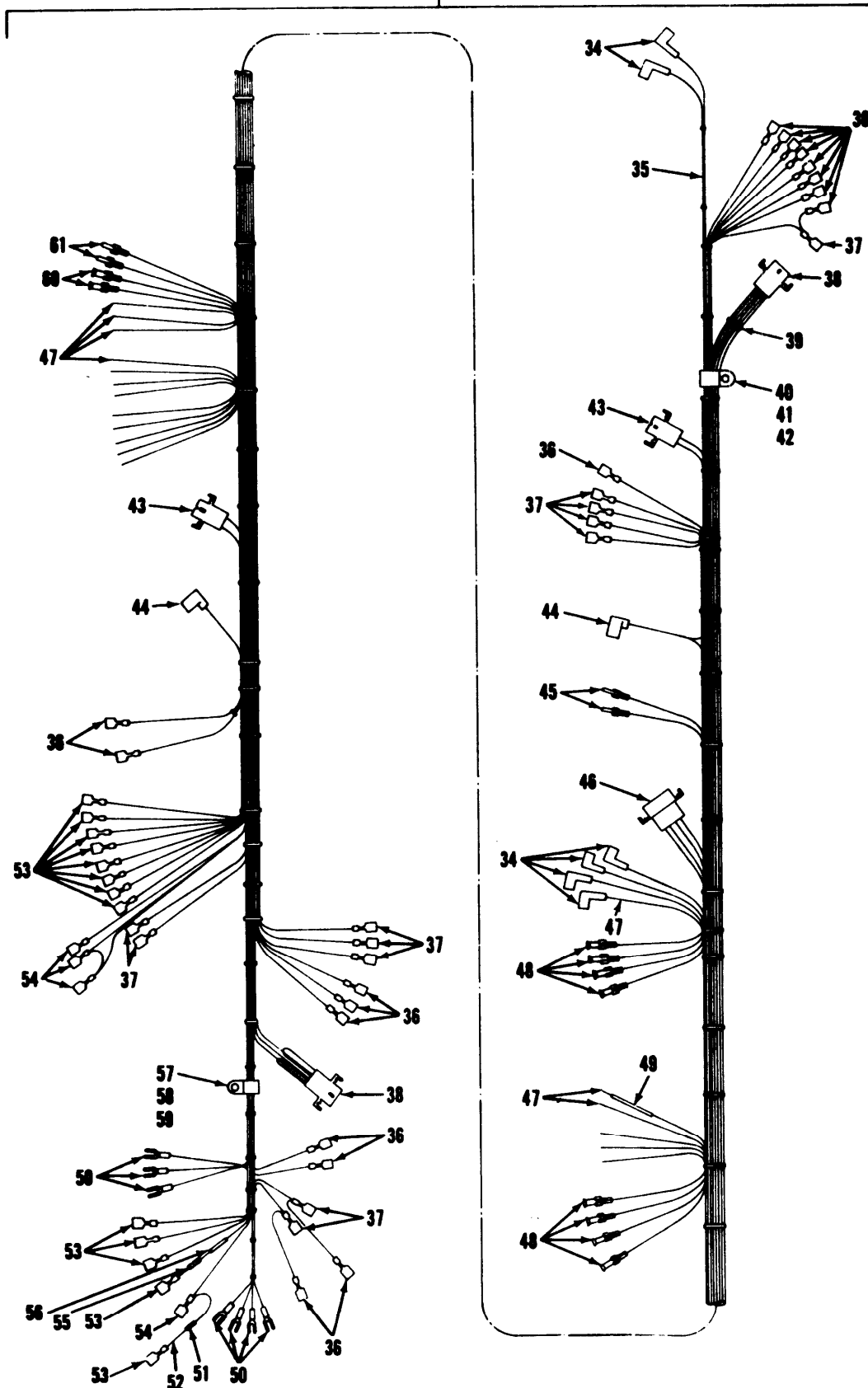


Figure 1. Electrical Components (Sheet 3 of 4)

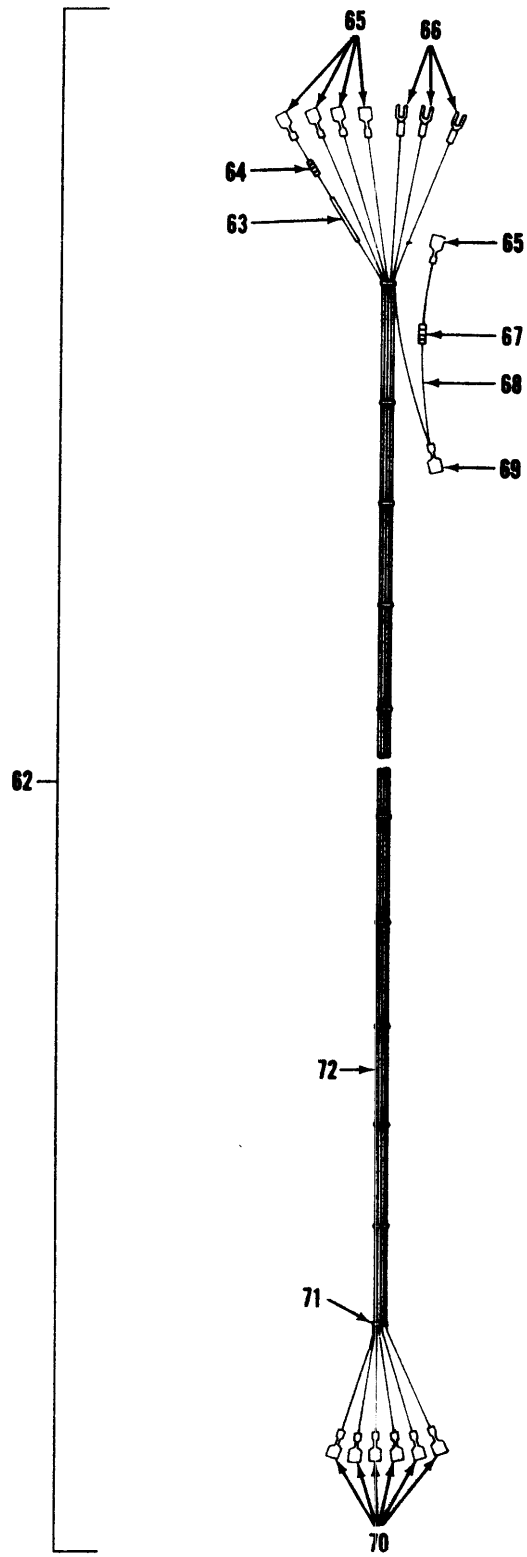


Figure 1. Electrical Components (Sheet 4 of 4)

SECTION II (1) ITEM NO	(2) SMR CODE	(3) FSCM	TM5-3610-256-24P (4) PART NUMBER	(5) DESCRIPTION AND USABLE ON CODE (UOC)	(6) QTY
GROUP 01 ELECTRICAL COMPONENTS					
FIG. 1 ELLECTRICAL COMPONENTS.					
1	XBFZZ	60887	33305	CORD ASSEMBLY,ELECT 0 TO 120V SINGLE PHASE 10 AMPS	1
2	XBFFF	60887	33306	CORD ASSEMBLY,ELECT 220 TO 240V 10 AMPS	1
3	XBOZZ	60887	150090	LABEL,MDL 8/10 AMP	1
3	XDOZZ	60887	33188	LABEL,MDX 1.5 AMP USED ON SERIAL NO 334 AND HIGHER	1
4	XBOZZ	60887	33874	LABEL,ABC 10	1
5	PAOZZ	81349	F03A250V10AS	FUSE,CARTRIDGE	1
6	XDFZZ	75915	348-8-7-1	FUSEHOLDER	1
7	PAOZZ	81349	F02B250V8-10A	FUSE,CARTRIDGE	1
7	PAOZZ	81349	F02B250V1-1/2A	FUSE,CARTRIDGE USED ON SERIAL NO 334 AND HIGHER	1
8	PAOZZ	60887	33309	RECEPTACLE PAPER	1
9	XDOZZ	60887	243	SCREW,PH RDH SEMS 10-24 X 3/8 ROUND PHILLIPS HEAD EXTERNAL SEMS MACHINE SCREW, STEEL-CAD PLATED	3
10	XBOZZ	60887	407	SCREW,PH PNH SEMS 8-32 X 3/8 EXTERNAL SEMS TYPE 23 SELF TAPPING SCREW-PHILLIPS PAN HEAD CAD PLATED	8
11	PAFZZ	98775	RCF-2S102-C61	BALLAST,LAMP	2
12	XDOZZ	60887	407	SCREW,PH PNH SEMS 8-32 X 3/8, EXTERNAL SEMS TYPE 23 SELF TAPPING SCREW PHILLIPS PAN HEAD CAD PLATED	4
13	XDOZZ	14726	NP5663	CONNECTOR,WIRE	4
14	XDOZZ	14726	NP-5115T	CONNECTOR,WIRE	21
15	PAFZZ	60887	33331	TRANSFORMER,POWER A	1
16	XDOZZ	60887	10212-1Z	CONNECTOR,MARR,#1	1
17	XBOZZ	14726	NP-5115T	CONNECTOR,WIRE	13
18	XBOZZ	14726	NP5663	CONNECTOR,WIRE	4
19	XDOZZ	28520	2683	PLUG,HOLE	1
20	XDOZZ	60887	30153	WASHER,STEEL 3/4 X 1.120 X 0.018 STEEL WASHER 1206010206	1
21	XBOZZ	60887	37175	LABEL,AMMONIA	1
22	PAOZZ	76385	Z3029 TYPE RC	GROMMET,RUBBER	3
23	XBOZZ	88044	AN515C-8-6	SCREW,RD HEAD MACH	1
23	XDOZZ	88044	AN515C-8-R6	SCREW,MACHINE,RDH USED ON SERIAL NO 334 AND HIGHER	1
24	XBOZZ	78189	4008-18-00	WASHER,LOCK #8 EXTERNAL-INTERNAL TYPE LOCK WASHER, NICKEL PLATED	1
25	PAFZA	77342	KUP 14 AE 5-120V	RELAY,ELECTROMAGNET	1
26	XBFZZ	14112	V01156AI83	MOTOR,DRIVE	1
26	PAFZZ	14112	V01156AE80	MOTOR,DRIVE USED ONSERIAL NO 334 AND HIGHER	1
27	XBOZZ	60887	245	SCREW,PH RDH SEMS 10-32 X 3/8 PHILLIPS EXTERNAL SEMS ROUND HEAD MACHINE SCREW, STEEL-CAD PLATED	1
28	XBOZZ	78189	4010-18-00	WASHER,LOCK # 10 LOCK WASHER	4

SECTION II (1) ITEM NO	(2) SMR CODE	(3) FSCM	TM5-3610-256-24P (4) PART NUMBER	(5) DESCRIPTION AND USABLE ON CODE (UOC)	(6) QTY
				EXTERNAL-INTERNAL, STEEL NICKEL PLATED	
29	XBFZZ	14112	K5465	.CAP, BRUSH	2
30	XBFZZ	14112	K5464-1	.HOLDER, BRUSH	2
31	XBFZZ	14112	K5468-005	.BRUSH AND SPRING	2
31	PAFZZ	14112	K09128-0009	.BRUSH, MOTOR USED ON SERIAL NO 334 AND HIGHER	2
32	XBFZZ	14112	R16C08H006P	.SCREW, SET	2
33	XBFHH	60887	33304	WIRING HARNESS	1
33	XDFZZ	60887	33343	WIRING HARNESS, MAIN USED ON SERIAL NO 334 AND HIGHER	1
34	XAFZZ	60887	36600	.TERMINAL, WIRE	6
35	XAFZZ	60887	53566	.WIRE, 18 GAGE	256
36	XAFZZ	00779	2-520183-2	.TERMINAL, WIRE	18
37	XAFZZ	00779	3-350819-2	.TERMINAL, WIRE	12
38	XAFZZ	27264	1292R	.RECEPTACLE	2
39	XBOZZ	56501	TY-232M	CABLE TIE, SHORT	1
40	XBOZZ	56501	TY-232M	CABLE TIE, SHORT	3
41	XDOZZ	6087	407	SCREW, PH PNH SEMS 8-32 X 3/8 EXTERNAL SEMS TYPE 23 SELF TAPPING SCREW-PHILLIPS PAN HEAD NICKET OR CAD PLATED	3
42	SBOZZ	59730	TC-828	STRAP, RETAINING	3
43	XAFZZ	27264	1545R	.RECEPTACLE	2
43	XAFZZ	27264	03-09-1021	.RECEPTACLE USED ON SERIAL NO 334 AND HIGHER	2
44	XAFZZ	00779	3-520132-2	.TERMINAL, WIRE	2
45	XAFZZ	60887	262556	.TERMINAL, WIRE	2
46	XAFZZ	60887	35356	.TERMINAL	1
46	XAFZZ	27264	03-09-2041	.TERMINAL, WIRE USED ON SERIAL NO 334 AND HIGHER	1
47	XAFZZ	60887	53739	.WIRE, 16 GAGE BLACK	13
48	XAFZZ	27264	1381-AT	.TERMINAL, WIRE	16
48	XAFZZ	27264	02-09-1117	.TERMINAL, WIRE USED ON SERIAL NO 334 AND HIGHER	15
49	XAFZZ	60887	53440	.SLEEVING	6
50	XAFZZ	00779	52929-1	.TERMINAL	7
51	XAFZZ	44655	OE5611	.RESISTOR	1
52	XAFZZ	60887	53531	.TUBING, ELECTRICAL	1
53	XAFZZ	60887	262554	.TERMINAL, WIRE	13
53	XAFZZ	00779	2-520181-2	.TERMINAL, WIRE USED ON SERIAL NO 334 AND HIGHER	3
54	XAFZZ	60887	256149	.TERMINAL	4
55	XAFZZ	50139	TYPE EB	.RESISTOR	1
56	XAFZZ	60887	262549	.TERMINAL, BUTT	1
57	XBOZZ	56501	TY-232M	CABLE TIE, SHORT	3
58	XBOZZ	60887	407	SCREW, PH RDH SEMS 8-32X3/8 EXTERNAL SEMS TYPE 23 SELF TAPPING SCREW-PHILLIPS PAN HEAD CAD OR NICKEL PLATED	3
59	XBOZZ	59730	TC-828	MTG PLATE, CABLE TIE	3
60	XAFZZ	27264	1189-AT	.TERMINAL	2

SECTION II				TM5-3610-256-24P	
(1)	(2)	(3)	(4)	(5)	(6)
ITEM	SMR		PART		
NO	CODE	FSCM	NUMBER	DESCRIPTION AND USABLE ON CODE (UOC)	QTY
60	XAFZZ	27264	02-09-1102	.TERMINAL,WIRE USED ON SERIAL NO 334 AND HIGHER	5
61	XAFZZ	27264	1190-T	.TERMINAL	2
61	XAFZZ	27264	02-09-2101	.TERMINAL,WIRE USED ON SERIAL NO 334 AND HIGHER	2
62	XDOZZ	60887	37154	HARNESS,WIRE,HI/LO	1
63	XDOZZ	60887	262549	.TERMINAL,BUTT	1
64	XDOZZ	50139	TYPE EB	.RESISTOR	1
65	XDOZZ	60887	262554	.TERMINAL,WIRE	5
66	XDOZZ	00779	52929-1	.TERMINAL,WIRE	3
67	XDOZZ	44655	OE5611	.RESISTOR	1
68	XDOZZ	60887	53531	.TUBING,PVC ELEC	1
69	XDOZZ	6087	256149	.TERMINAL	1
70	XDOZZ	00779	2-520183-2	.TERMINAL,WIRE	6
71	XDOZZ	22421	TY-232M	STRAP,TIEDOWN,ELECT	15
72	XDFZZ	60887	53566	.WIRE,18 GAGE	50

END OF FIGURE

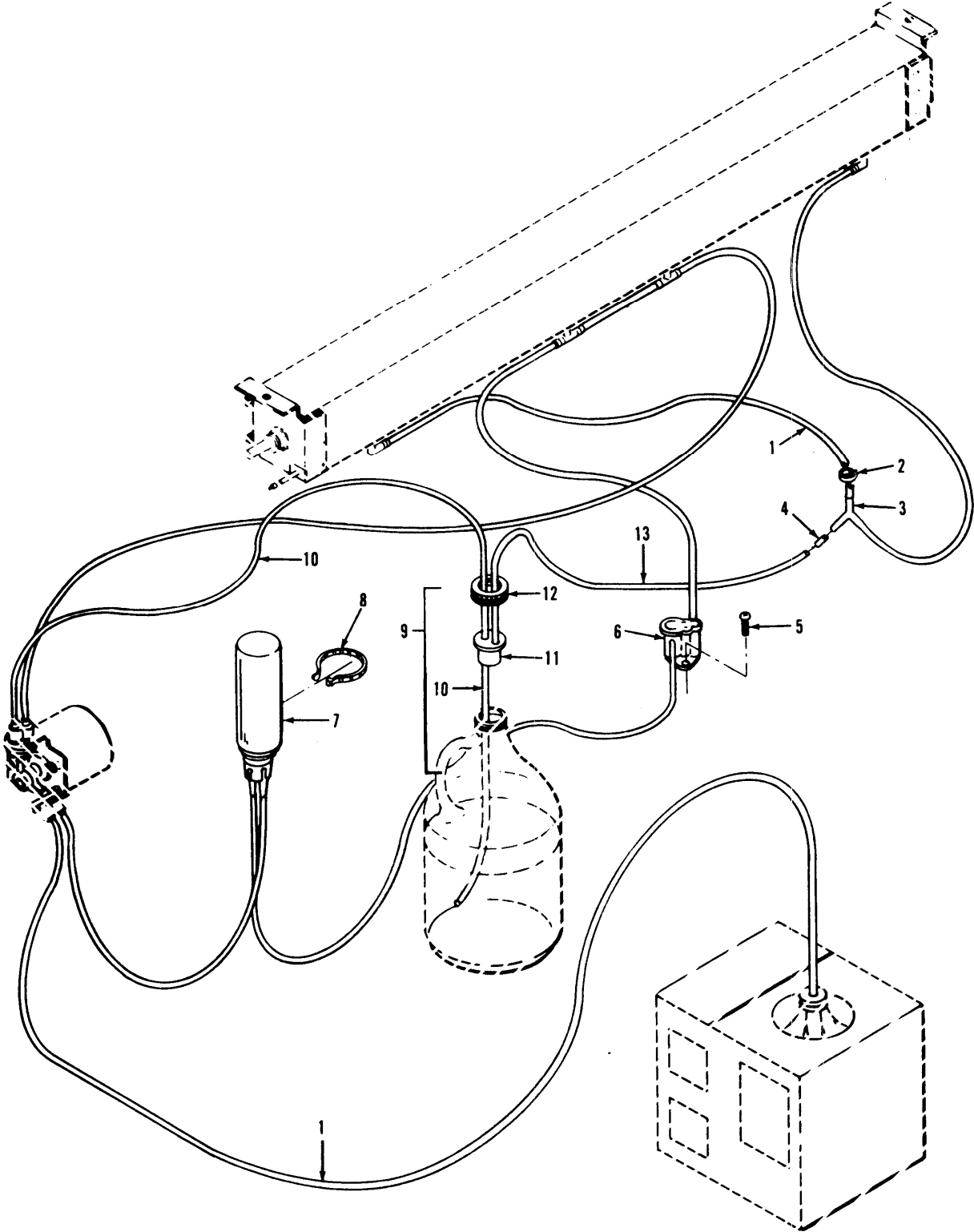


Figure 2. Ammonia Supply System (Sheet 1 of 2)

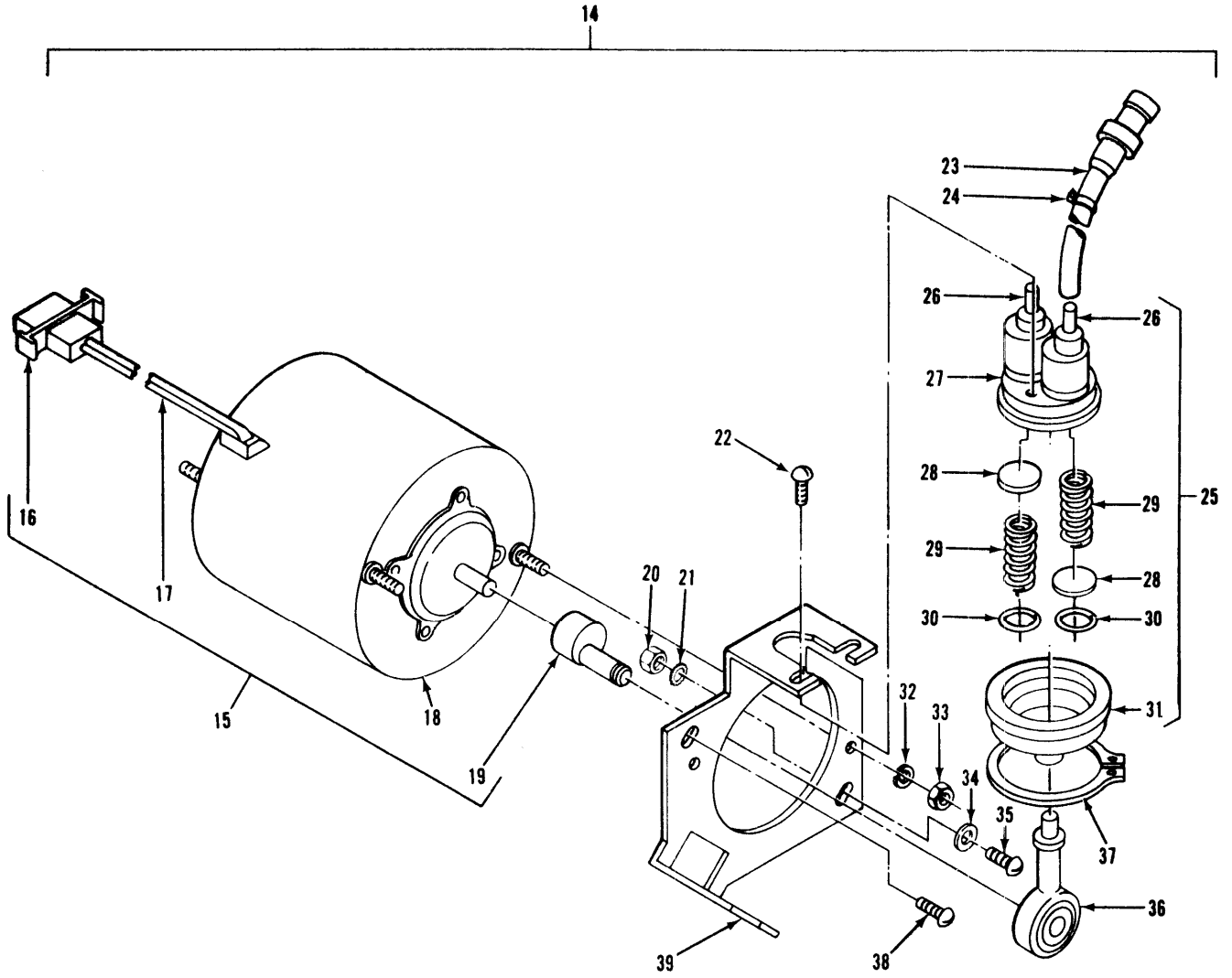


Figure 2. Ammonia Supply System (Sheet 2 of 2)

SECTION II (1) ITEM NO	(2) SMR CODE	(3) FSCM	TM5-3610-256-24P (4) PART NUMBER	(5) DESCRIPTION AND USABLE ON CODE (UOC)	(6) QTY
GROUP 02 AMMONIA SUPPLY SYSTEM					
FIG. 2 AMMONIA SUPPLY SYSTEM.					
1	XBOZZ	60887	53260	TUBING, TYGON	12
2	XBOZZ	60887	3236	CLAMP, HOSE CAT # A5 SELF-TIGHTENING HOSE CLAMP	3
3	XBOZZ	27901	64014	CONNECTOR, Y	1
4	XBOZZ	60887	53510	TUBING	1
5	XBOZZ	60887	407	SCREW, PH PNH SEMS 8-32 X 3/8 EXTERNAL SEMS TYPE 23 SELF TAPPING SCREW PHILLIPS PAN HEAD CAD PLATED	2
6	PAHZZ	60887	33908	VALVE, VACUUM REGULA	1
7	PAOZZ	60887	34307	BOTTLE ASSEMBLY	1
8	XBOZZ	56501	TY-232M	CABLE TIE, SHORT	1
9	XBOZZ	60887	33835	HOSE ASSY, DISCHARGE	1
9	PAOZZ	60887	38219	STOPPER ASSY, AMNA BOTTLE USED ON SERIAL NO 334 AND HIGHER	1
10	XBOZZ	6087	53742	.TUBING, TYGON	5
11	PAOZZ	60887	33271	.STOPPER, BOTTLE, AMMO	1
11	XAOZZ	60887	33285	.SEAL, BTL CAP USED ON SERIAL NO 334 AND HIGHER	1
12	PAOZZ	60887	33626	.CAP, STOPPER	1
12	XAOZZ	60887	38292	.CAP, STOPPER USED ON SERIAL NO 334 AND HIGHER	1
13	XBOZZ	60887	53601	.TUBING, VINYL	5
14	PAHHH	60887	33702	PUMP, CENTRIFUGAL	1
15	XAHZZ	60887	33701	.MOTOR, ALTERNATING C	1
16	XBHZZ	27264	1545P	..PLUG, TERMINAL	1
17	XBHZZ	27264	02-09-2101	..TERMINAL, WIRE	2
18	PAHZZ	62119	JA2M139N	..MOTOR, ALTERNATING C	1
19	XBHZZ	60887	33698	..ECCENTRIC	1
20	XBOZZ	88044	AN340-C8	NUT, HEX	1
21	XBOZZ	78189	4008-18-00	WASHER, LOCK #8 LOCK WASHER EXTERNAL-INTERNAL STEEL NICKEL PLATED	1
22	XBHZZ	60887	69	.SCREW, PH RDH 10-24 X 3/8 ROUND PHILLIPS HEAD SELF-TAPPING SCREW, TYPE F STEEL CAD PLATED	4
23	PAOZZ	60887	33703	DISPERSER-ABSORBER	1
24	XBOZZ	60887	3236	CLAMP, HOSE	1
25	XDHZZ	60887	33257	.BODY, PUMP	2
26	XDHZZ	60887	33260	..VALVE, PUMP	2
27	XDHZZ	60887	33269	..BODY, PUMP	1
28	XDHZZ	60887	33264	..VALVE, PUMP	2
29	XDHZZ	60887	33253	..SPRING, HELICAL, COMP	2
30	XDHZH	96906	MS28775-012	..PACKING, PREFORMED	2
31	PAHZZ	60887	33281	.DIAPHRAGM, PUMP	2
32	XBHZZ	78189	4010-18-00	.WASHER, LOCK #10 LOCK WASHER EXTERNAL-INTERNAL STEEL NICKEL PLATED	2
33	XBHZZ	88044	AN345-C10	.NUT, HEX	2

SECTION II				TM5-3610-256-24P	
(1)	(2)	(3)	(4)	(5)	(6)
ITEM NO	SMR CODE	FSCM	PART NUMBER	DESCRIPTION AND USABLE ON CODE (UOC)	QTY
34	XBOZZ	60887	3095	WASHER,FLAT 13/64 ID X 7/16 OD X .0.032 STEEL FLAT WASHER	1
35	XBOZZ	60887	59	SCREW,PH RDH MACH 8-32 X 1/2 ROUND PHILLIPS HEAD, EXTERNAL SEMS, MACHINE SCREW, STEEL-CAD PLATED	1
36	XBHHZ	60887	33700	.ROD,CONNECTING,PUMP	2
37	XBHZZ	79136	5115-12	.CLIP,SPRING 1/8" STAINLESS STEEL REINFORCED CIRCULAR PUSH ON 0.010 THK	2
38	XBOZZ	60887	407	SCREW,PH PNH SEMS 8-32 X 3/8 EXTERNAL SEMS TYPE 23 SELF TAPPING SCREW-PHILLIPS PAN HEAD CAD OR NICKEL PLATED	1
39	XDHZZ	60887	33697	.BRACKET,PUMP	1

END OF FIGURE

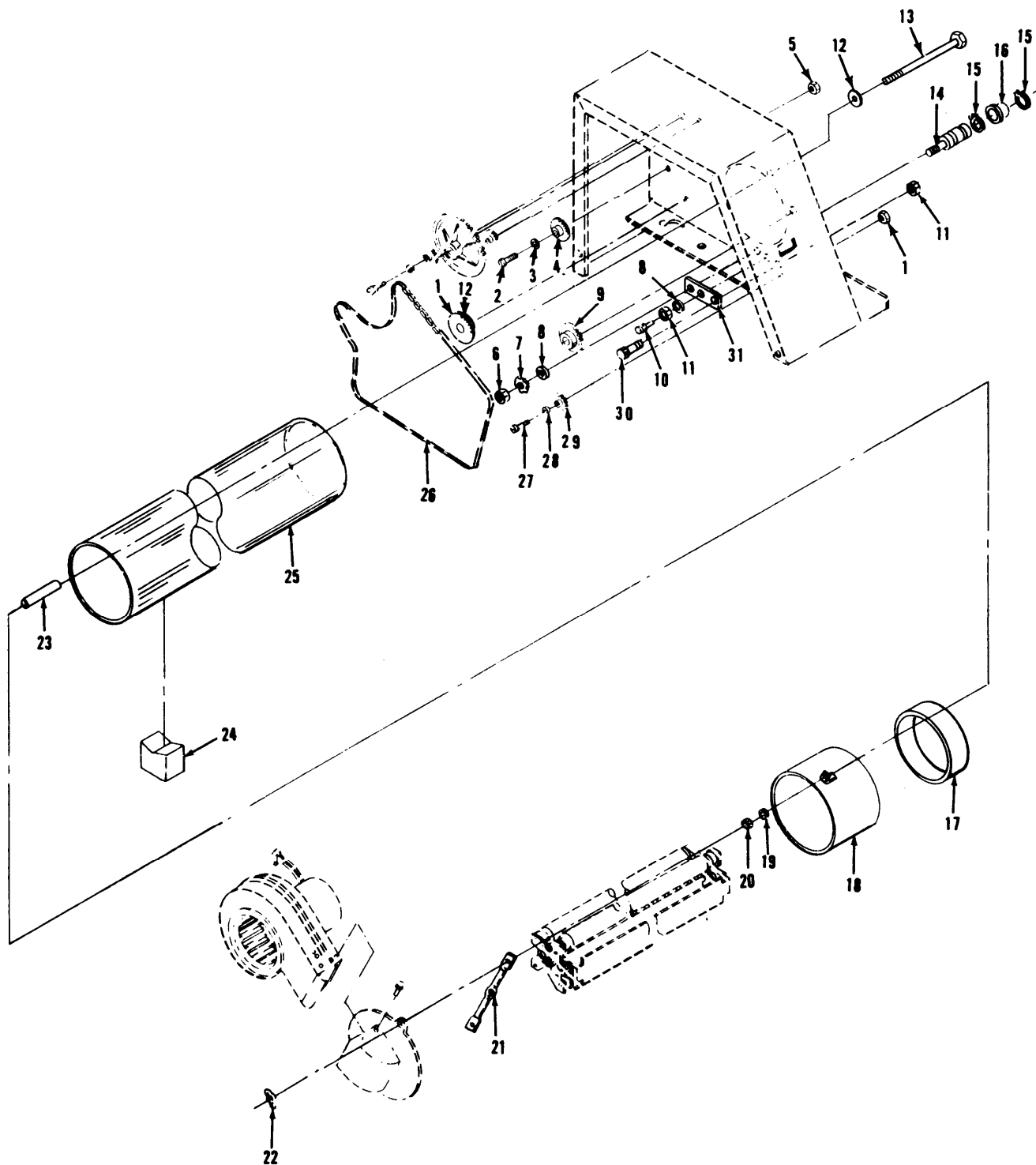


Figure 3. Printer Assembly (Sheet 1 of 4)

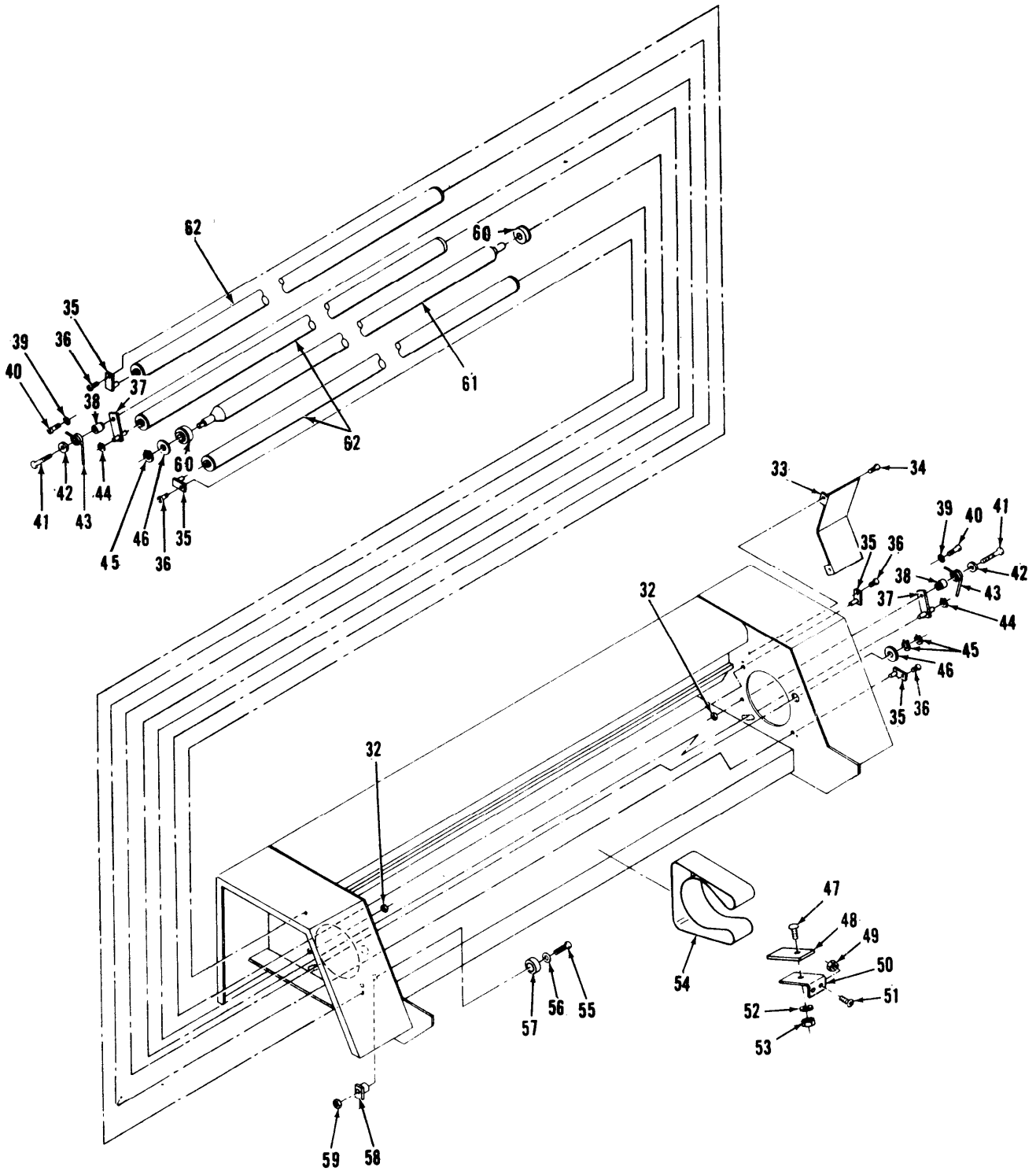


Figure 3. Printer Assembly (Sheet 2 of 4)

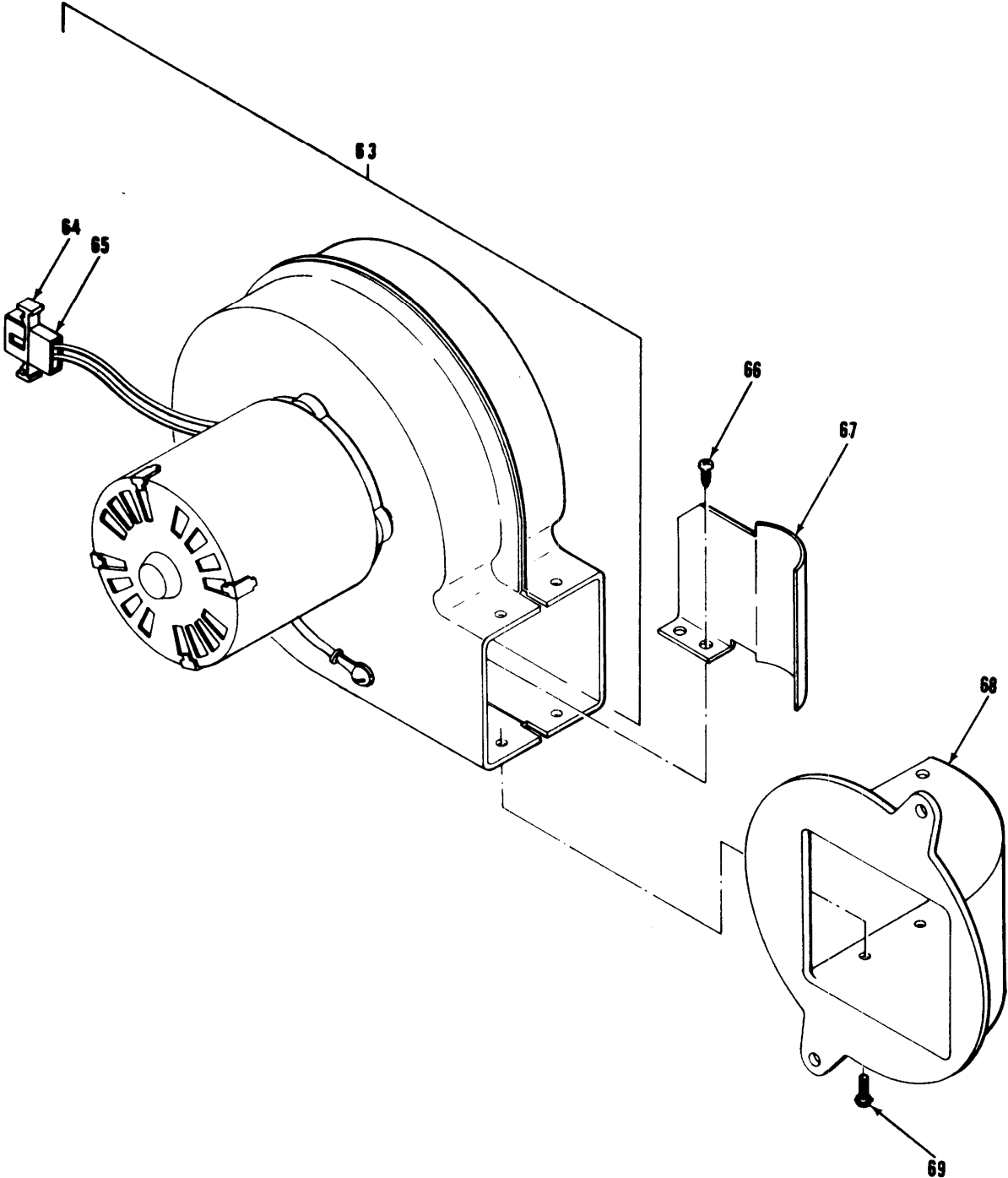


Figure 3. Printer Assembly (Sheet 3 of 4)

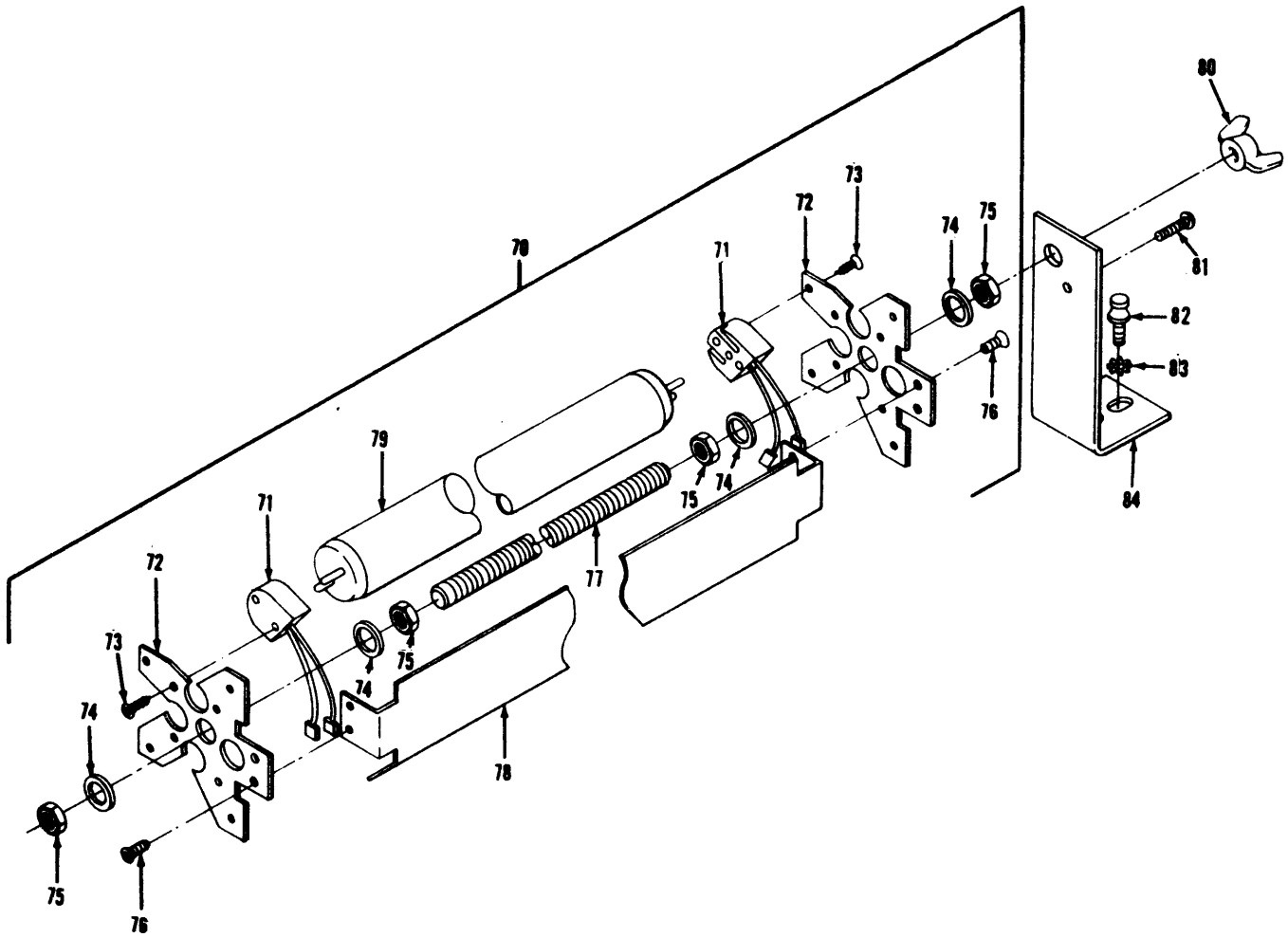


Figure 3. Printer Assembly (Sheet 4 of 4)

SECTION II (1) ITEM NO	(2) SMR CODE	(3) FSCM	TM5-3610-256-24P (4) PART NUMBER	(5) DESCRIPTION AND USABLE ON CODE (UOC)	(6) QTY
GROUP 03 PRINTER ASSEMBLY					
FIG. 3 PRINTER ASSEMBLY.					
1	XBOZZ	60887	37173	SPROCKET,21 TOOTH	1
1	XDOZZ	60887	37729	SPROCKET,19 TOOTH USED ON SERIAL NO 334 AND HIGHER	1
2	XDOZZ	96906	MS16637-19	SCREW,SHOULDER USED ON SERIAL NO 334 AND HIGHER	1
3	XDOZZ	60887	37740	WASHER USED ON SERIAL NO 334 AND HIGHER	1
4	XDOZZ	60887	758044	SPROCKET ASSY,IDLER USED ON SERIAL NO 334 AND HIGHER	1
5	XDOZZ	96906	MS35691-502	NUT,HEX,JAM USED ON SERIAL NO 334 AND HIGHER	1
6	XBOZZ	88044	AN340-C10	NUT,HEX	2
7	XBOZZ	78189	4010-18-00	WASHER,LOCK #10 LOCK WASHER EXTERNAL-INTERNAL STEEL NICKEL PLATED	2
8	XBOZZ	88044	AN960-C416	WASHER,FLAT	4
9	PAOZZ	60887	33953	SPROCKET WHEEL	1
10	XBFZZ	01226	S-54B	PLUNGER,SPRING 1/4-20 X 3/4 LG HEX SOCKET HEADLESS SPRING PLUNGER STEEL, BLACK OXIDE-STEEL ROUND NOSE 1/8 LG X 0.119 +0.000 -0.002 DIA FLLD SPRING PRESS	2
11	XBFZZ	88044	AN340-C416	NUT,HEX	2
12	XBOZZ	96906	MS35333-60	WASHER,LOCK,FLAT	2
13	XBOZZ	60887	3419	SCREW,RDH MACHINE 10-24 X 4-1/2 ROUND HEAD STEEL MACHINE SCREW- BLACK OXIDE FINISH	2
14	PAFZZ	60887	37139	BEARING,WASHER,THRU	2
15	XBOZZ	60887	3215	RING,RETAINING	4
15	XDOZZ	60887	3215-1B	RING,RETAINING USED ON SERIAL NO 334 AND HIGHER	4
16	PAFZZ	60887	47431	BEARING UNIT,BALL	2
17	PAHZZ	60887	33868	.SEAL,NONMETALLIC CH	1
18	PAHZZ	60887	33976	PIPE,AIR CONDITIONI	1
19	XBOZZ	78189	4010-18-00	WASHER,LOCK #10 LOCK WASHER EXTERNAL-INTERNAL STEEL NICKEL PLATED	2
20	XBOZZ	88044	AN340-C10	NUT,HEX	2
21	PAHZZ	60887	33960	BR,MOUNTING,LAMP A	1
22	XBOZZ	60887	3039	NUT,WING 10-24 STAINLESS STEEL WING NUT 18-8	2
23	XBOZZ	60887	33147	BUSHING,LAMP HOLDER	2
24	PAFZZ	60887	33944	SUPPORT,CYLINDER	2
25	PAFZZ	60887	33245	CYLINDER,PRINTING	1
26	PAFZZ	60887	37174	CHAIN,ROLLER	1
26	PAFZZ	60887	33339	CHAIN,DRIVE USED ON SERIAL NO 334 AND HIGHER	1
27	XBOZZ	96906	MS16637-19	SCREW,SHOULDER	1

SECTION II (1) ITEM NO	(2) SMR CODE	(3) FSCM	TM5-3610-256-24P (4) PART NUMBER	(5) DESCRIPTION AND USABLE ON CODE (UOC)	(6) QTY
28	XBOZZ	88044	AN960-C516	WASHER, FLAT	2
29	XBOZZ	60887	400037-1	SPROCKET, IDLER	1
30	XBOZZ	96906	MS16637-1	SCREW, SHOULDER	2
31	XBFZZ	60887	37138	ARM	2
32	XBOZZ	60887	3224	NUT, HEX ELAS STOP 1/4-20 HEX ELASTIC STOP NUT CAD PLATE	2
33	XBOZZ	60887	33920	SHIELD, LIGHT	1
34	XBOZZ	60887	409	SCREW, PH RDH SEMS 8-32 X 1/4 PHILLIPS BINDING HEAD EXTERNAL SEMS TYPE F SHEET METAL SCREW-STEEL CAD OR NICKEL PLATED	2
35	XBOZZ	60887	33070	PLATE, MTG, RLR ASSY	4
36	XBOZZ	60887	409	SCREW, PH RDH SEMS 8-32 X 1/4 PHILLIPS BINDING HEAD EXTERNAL SEMS TYPE F SHEET METAL SCREW-STEEL CAD PLATED	4
37	XBOZZ	60887	33634	STUD ASSY, TNSN RLR	2
38	XBOZZ	60887	33633	SPACER, TRSN SPRING	2
39	XBOZZ	96906	MS35333-60	WASHER, LOCK	2
40	XBOZZ	96906	MS16637-4	SCREW, SHOULDER	2
41	XBOZZ	96906	MS35289-10	SCREW, CAP	2
42	XBOZZ	60887	3176	WASHER, FLAT 0.272/0.276 ID X 7/8 OD X 3/32 THK FLAT WASHER CAD PLATED	2
43	XBOZZ	60887	33632	SPRING, TORSION	2
44	XBOZZ	96906	MS16633-25	RING, RETAINING	2
45	XBOZZ	78136	5555-62	RING, GRIP	3
46	XBOZZ	60887	2953	WASHER, STEEL 7/8 OD X 41/64 ID X 1/ 32 STEEL WASHER CAD PLATED	2
47	XBOZZ	88044	AN515C-8-6	SCREW, RDH MACHINE	1
47	XDOZZ	88044	AN515C-8-R6	SCREW, RDH, MACHINE USED ON SERIAL NO 334 AND HIGHER	1
48	XBOZZ	00779	GR-47	CARBON, ST DISCH	1
49	XBOZZ	88044	AN340-C8	NUT, HEX	2
50	XBOZZ	60887	33212	SPRING, LEAF	1
51	XBOZZ	60887	71	SCREW, PH RDH SEMS 8-32 X 1/4 ROUND PHILLIPS HEAD EXTERNAL SEMS MACHINE SCREW-STEEL CAD PLATED	2
52	XBOZZ	96906	MS35333-46	WASHER, LOCK	1
53	XBOZZ	88044	AN340-C6	NUT, HEX	1
54	XBOZZ	60887	33882	BELT, POLYEST, PTR	1
55	XBOZZ	88044	AN515-C416-24	SCREW, RDH MACHINE	1
56	XBFZZ	60887	22110-1	SPACER, CYL BEARING	1
57	XBFZZ	60887	26236-1	BEARING ASSY, CYL	1
58	XBFZZ	60887	32321-1	SPACER, CYL BEARING	1
59	XBOZZ	88044	AN340-C416	NUT, HEX	1
60	XBOZZ	60887	30150-1	HOUSING ASS, BEARING	2
61	XBOZZ	60887	33954	ROLLER ASST, PTR DRV	1
62	XBOZZ	60887	33063	ROLLER ASSY, IDLER	3
63	PAHZZ	16327	9C946 TYPE U21	.FAN, CENTRIFUGAL	1
64	XBOZZ	27262	1545P	.PLUG, TERMINAL	1
65	XBOZZ	27262	1190-T	.TERMINAL, WIRE	2
65	XDOZZ	27264	02-09-2101	.TERMINAL, WIRE USED ON SERIAL NO	2

SECTION II (1)	SMR (2)	(3)	TM5-3610-256-24P (4)	(5)	(6)
ITEM NO	CODE	FSCM	PART NUMBER	DESCRIPTION AND USABLE ON CODE (UOC)	QTY
66	XBOZZ	60887	72	334 AND HIGHER SCREW,PH RDH SH MET 8 X 3/8 ROUND PHILLIPS HEAD TYPE Z SELF TAPPING SCREW STEEL CAD PLATED	2
67	PAHZZ	60887	33978	VANE,MANIFOLD	1
68	PAHZZ	60887	33977	MANIFOLD	1
69	XBOZZ	60887	466	SCREW,PH RD HD SEMS 8-32 X 1/2 EXTERNAL SEMS TYPE F PHILLIPS ROUND HEAD SHEET METAL SCREW CAD PLATED	4
70	PAOZZ	60887	33985	LAMP ASSEMBLY	1
71	PAOZZ	60887	33154	.LAMPHOLDER	8
72	XBOZZ	60887	33851	.PLATE,LAMP HOLDER	2
73	XBOZZ	88044	AN500-4-R8	.SCREW,PH FILH	16
74	XBOZZ	60887	11268	.WASHER,LOCK 3/8 LOCK WASHER STAINLESS STEEL	4
75	XBOZZ	60887	356	NUT,HEX	4
76	XBOZZ	60887	253	SCREW,PH RDH SEMX 8-32 X 3/8 ROUND PHILLIPS HEAD EXTERNAL SEMS MACHINE SCREW STEEL CAD PLATED	4
77	XBOZZ	60887	33984	.ROD,THREADED	1
78	XBOZZ	60887	33831	.BAFFLE,LAMP	1
79	PAOZZ	60887	33026	LAMP,FLOURESCENT	4
80	XDOZZ	60887	416	NUT,WING 3/8 X 16 WING NUT STEEL CAD OR NICKEL PLATED	1
81	XDOZZ	96906	MS51957-48	SCREW,MACHINE	1
82	XDOZZ	60887	3473	SCREW,KNORLED HEAD 8-32 X 3/8 KNURLED HEAD SCREW BRAS STYLE #1 BRIGHT NICKEL PLATED	2
83	XDOZZ	96906	MS35335-31	WASHER,LOCK	2
84	XDOZZ	60887	33825	BRACKET,LAMP SPRT	1

END OF FIGURE

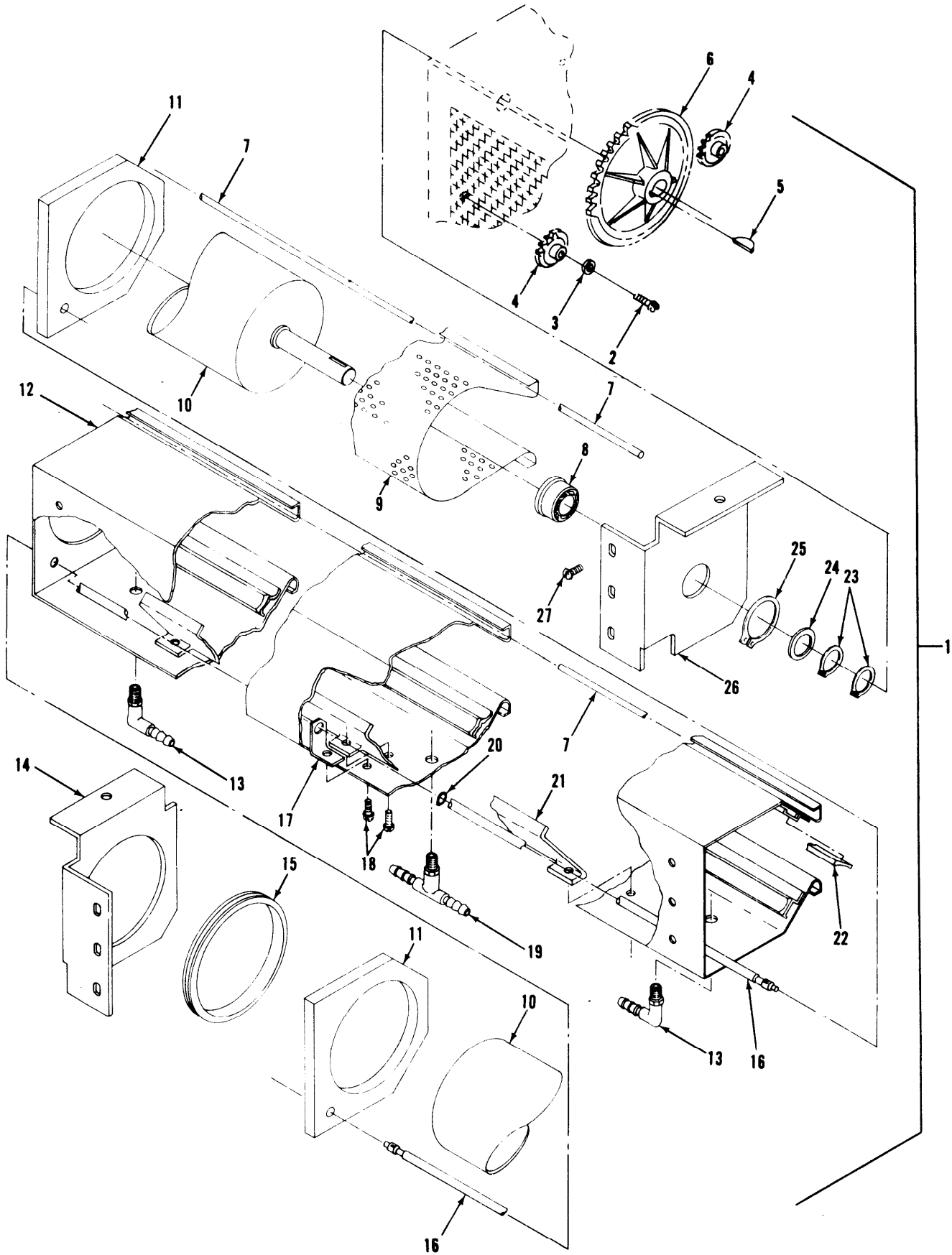


Figure 4. Developer Assembly

SECTION II		TM5-3610-256-24P			
(1)	(2)	(3)	(4)	(5)	(6)
ITEM NO	SMR CODE	FSCM	PART NUMBER	DESCRIPTION AND USABLE ON CODE (UOC)	QTY
GROUP 04 DEVELOPER ASSEMBLY					
FIG. 4 DEVELOPER ASSEMBLY.					
1	PAHZZ	60887	33961	TANK ASSEMBLY,DEVEL	1
2	XBOZZ	96906	MS16637-19	SCREW,SHOULDER	2
3	XBOZZ	88044	AN960-C516	WASHER,FLAT	4
4	XBOZZ	60887	400037	SPROCKET,IDLER	2
5	XBOZZ	31368	404	KEY,WOODRUFF	1
6	PAOZZ	60887	33950	SPROCKET WHEEL	1
7	XBHZZ	60887	53601	.TUBING,VINYL	10
8	XBHZZ	60887	34696	.BEARING	1
9	XBHZZ	60887	53652	.MAT,TEFLON	5
9	XDFZZ	60887	53837	.MAT,TEFLON USED ON SERIAL NO 334 AND HIGHER	5
10	XBHZZ	60887	33979	.ROLLER ASSY,DEV	1
11	XBHZZ	00779	R10480	.GASKET,END,DEV TANK	2
12	XBHZZ	60887	33962	.SHEET ASSY,DEV TANK	1
13	XBHZZ	27901	63191	.ELBOW	2
14	XBHZZ	60887	33729	.BRKT,MTG,DEV TANK,R	1
15	XBHZZ	11083	G51H-B	.GROMMET,ROLLER,DEV	1
16	PAOZZ	60887	33667	.ROD,HEATER	2
17	XBHZZ	60887	33969	.SPRT,ANGLE,HEATER	1
18	XBHZZ	60887	3230	.SCREW,RDH SEMS 8-32 X 3/8 PHILLIPS SLOTTED ROUND HEAD SEMS UNITS WITH EXTERNAL TYPE WASHER CAD PLATED	4
19	XBHZZ	00779	N3MTB-2	.CONNECTOR,T	2
20	XBHZZ	79136	5555-31-H	.RING,GRIP 5/16 DIA GRIP RING EXTERNAL STAINLESS STEEL 420	2
21	XBHZZ	60887	33968	.SHIELD,HEAT	1
22	XBHZZ	60887	53718	.ADHESIVE,SELF,STRIP	10
23	XBHZZ	60887	3015	.RING,GRIP GRIP RING SERIES # 5555-50 CARBON SPRING STEEL OIL DIPPED	2
24	XBHZZ	88044	AN960-816L	.WASHER,STEEL	1
25	XBHZZ	79136	5100-112	.RING,EXT RETAINING 1-1/8 EXTERNAL RETAINING RING	1
26	XBHZZ	60887	33965	.BRKT,MTG,DEV TANK,L	1
27	XBHZZ	60887	3278	.SCREW,RDH SEMS 10-24 X 3/8 SLOTTED ROUND HEAD EXTERNAL SEMS TOOTH WASHER CADPLATED	6

END OF FIGURE

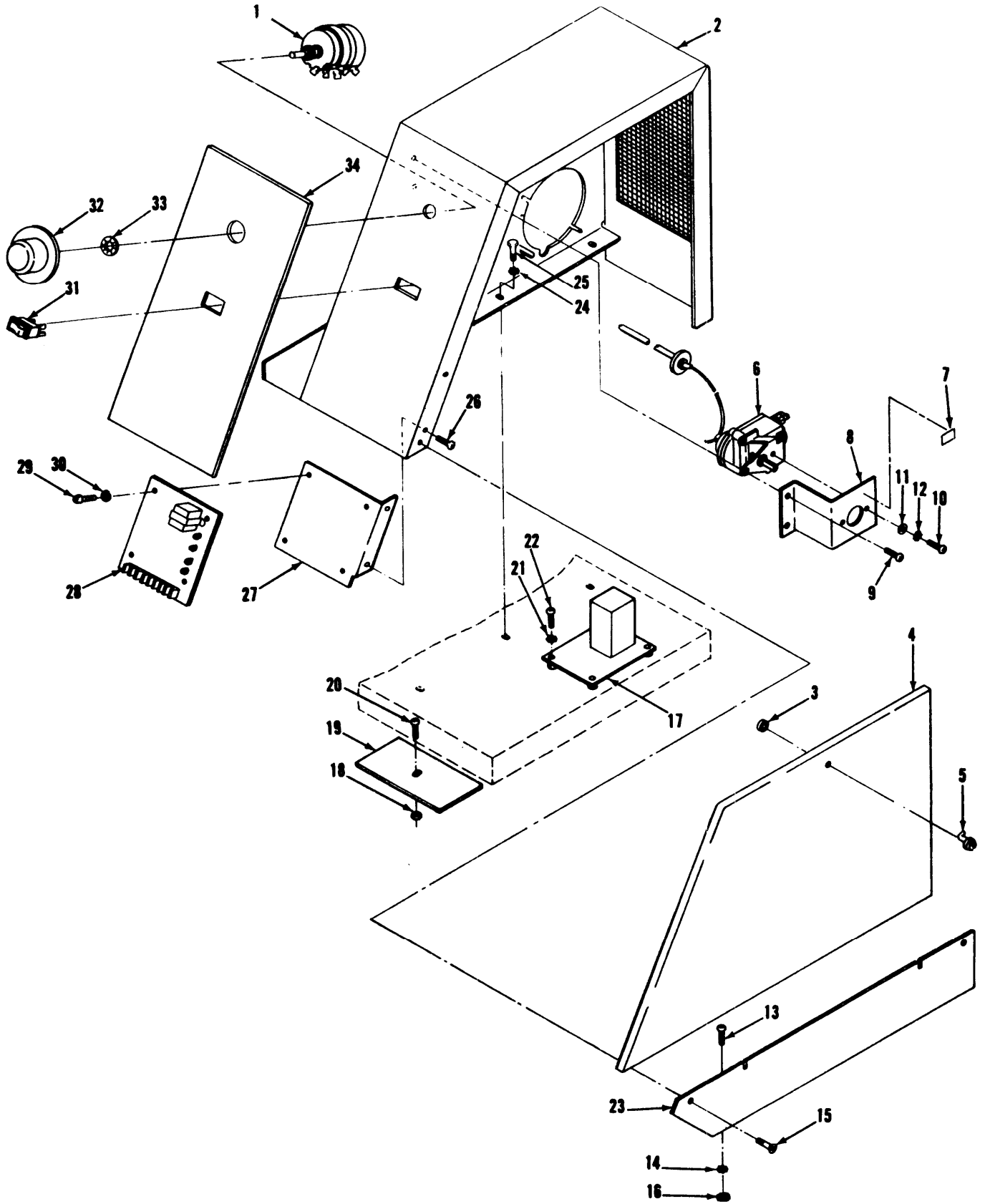


Figure 5. Machine Cabinet Group (Sheet 1 of 4)

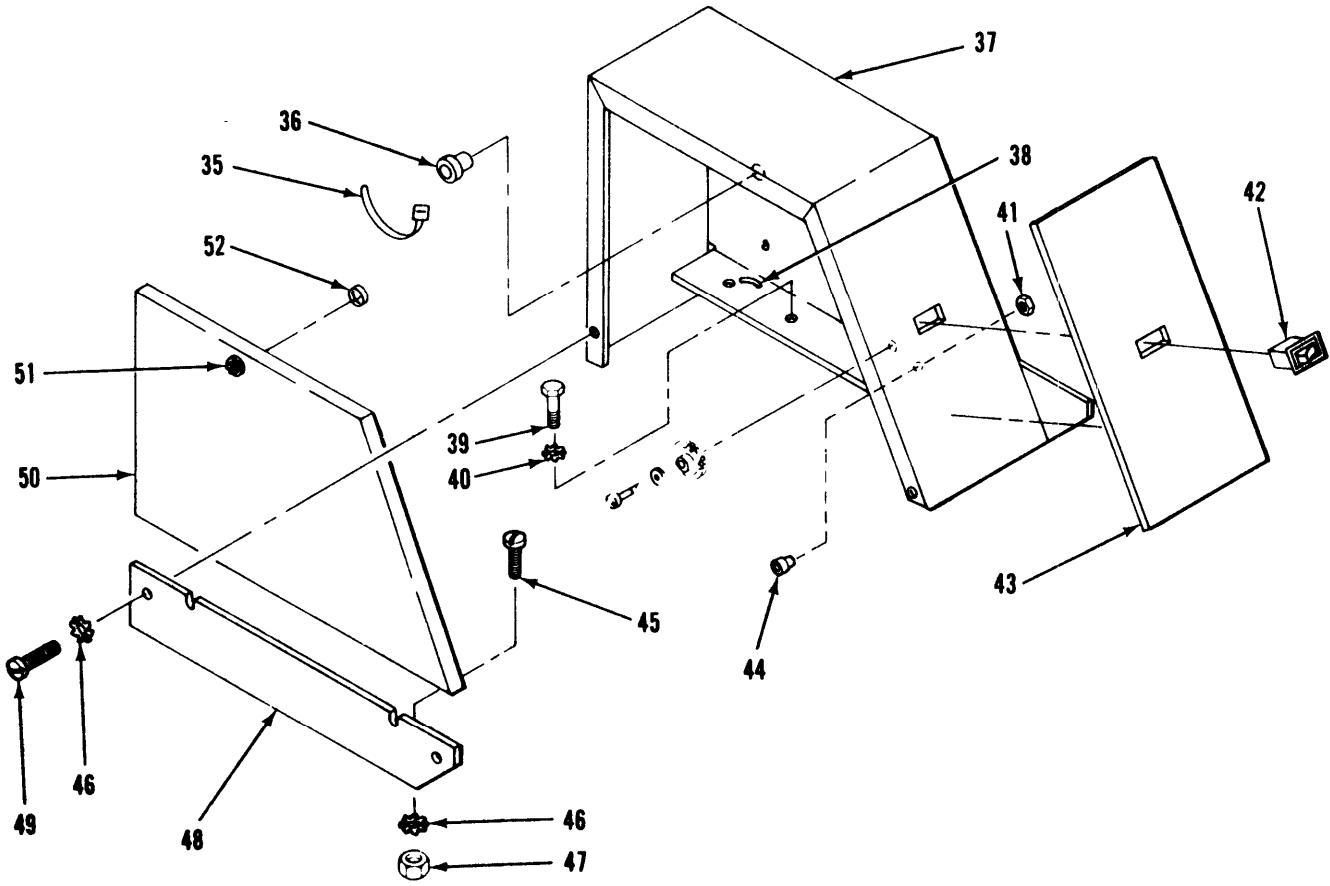


Figure 5. Machine Cabinet Group (Sheet 2 of 4)

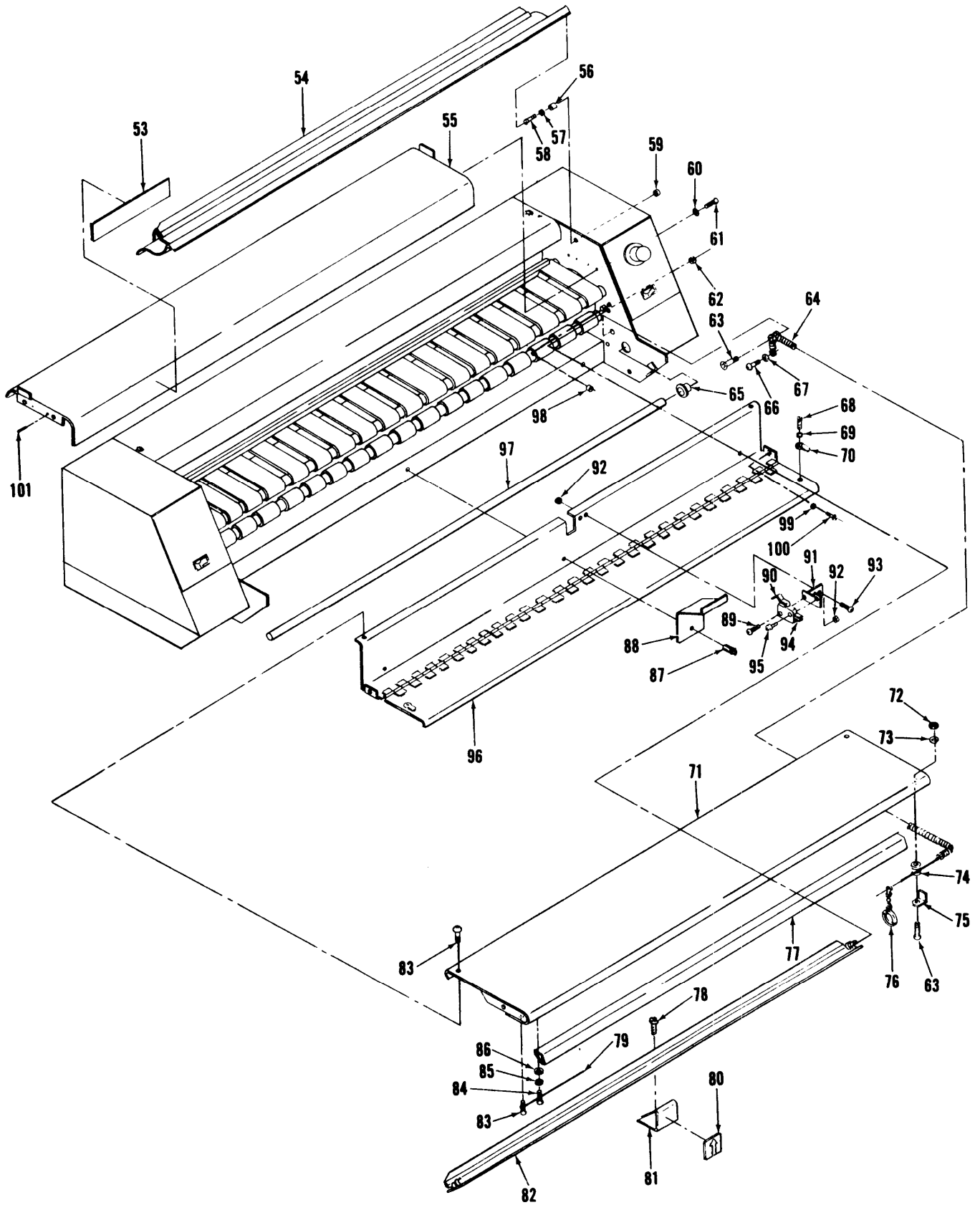


Figure 5. Machine Cabinet Group (Sheet 3 of 4)

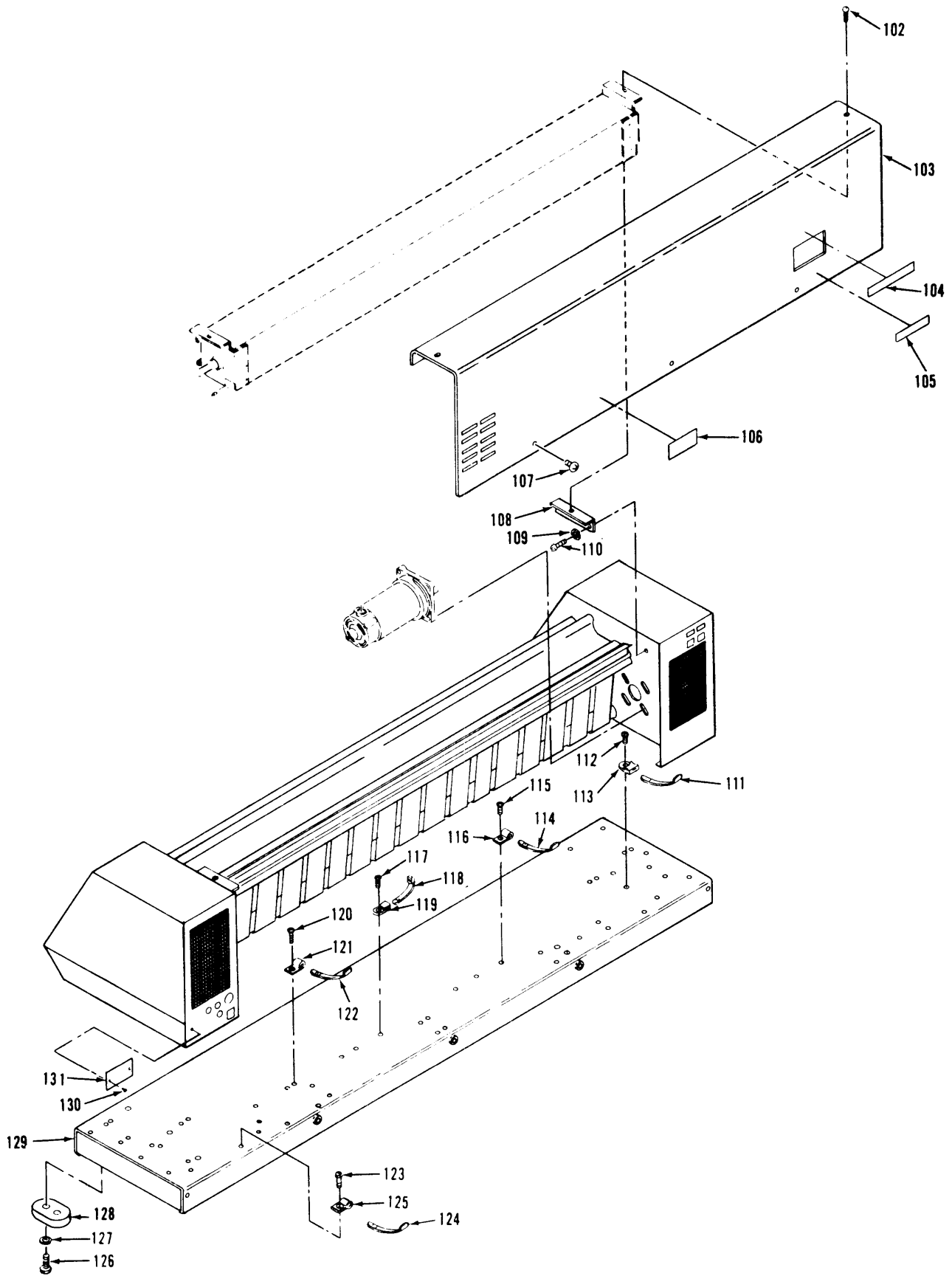


Figure 5. Machine Cabinet Group (Sheet 4 of 4)

SECTION II (1) ITEM NO	(2) SMR CODE	(3) FSCM	TM5-3610-256-24P (4) PART NUMBER	(5) DESCRIPTION AND USABLE ON CODE (UOC)	(6) QTY
GROUP 05 MACHINE CABINET GROUP					
FIG. 5 MACHINE CABINET GROUP					
1	PAOZZ	60887	37163	POTENTIOMETER	1
1	PAOZZ	60887	30943	POTENTIOMETER USED ON SERIAL NO 334 AND HIGHER	1
2	PAOZZ	660887	33958	ENDPLATE ASSEMBLY,R	1
3	XAOZZ	78189	3502-16-06-0551	WASHER,SPRING 5/8 X 9/32 X 0.015 SPRING WASHER STEEL	1
4	XBOZZ	60887	33643	DOOR ASSY,MACH R	1
5	XDOZZ	94222	61-10-2-0	LATCH	1
6	PAFZZ	65289	261-202	SWITCH,THERMOSTATIC	1
7	XDOZZ	60887	48807	LABEL,TANK THERMSW	1
8	XDOZZ	60887	758402	BRKT,THERMOSWITCH	1
9	XBOZZ	60887	509	SCREW,PH BDGH SEMS 6-32 X 3/16 PHILLIPS BINDING HEAD EXTERNAL SEMS STEEL MACHINE SCREW CAD OR NICKEL PLATED	2
10	XDOZZ	60887	524	SCREW,PHH SEMS 6-32 X 3/8 PHILLIPS PAN HEAD EXTERNAL SEMS TYPE P SHEET METAL SCREW STEEL CAD OR NICKEL PLATED	4
11	XDOZZ	60887	37368	WASHER,LOCK,THERMSW	1
12	XDOZZ	78189	4006-14-00	WASHER,LOCK #6 LOCK WASHER EXTERNAL-INTERNAL TOOTH STEEL NICKEL PLATED	1
13	XBOZZ	60887	407	SCREW,PH PNH SEMS 8-32 X 3/8 EXTERNAL SEMS TYPE 23 SELF TAPPING SCREW PHILLIPS PAN HEAD CAD OR NICKET PLATED	2
14	XBOZZ	78189	4008-18-00	WASHER,LOCK #8 LOCK WASHER EXTERNAL-INTERNAL NICKET PLATED	3
15	XBOZZ	60887	253	SCREW,PH RDH MACH 8-32 X 3/8 ROUND PHILLIPS HEAD EXTERNAL SEMS MACHINE SCREW STEEL CAD PLATED	1
16	XBOZZ	88044	AN340-C8	NUT,HEX	1
17	XBOZZ	28081	Z3T-00300-061	TIMER	1
18	XBOZZ	88044	AN340-C10	NUT,HEX	1
19	XBOZZ	60887	37536	PLATE,PROTECTION	1
20	XBOZZ	60887	3233	SCREW,PH HEAD SEMS 10-24 X 3/8 PHILLIPS TRUSS HEAD STEEL EXTERNAL SEMS MACHINE SCREW CHROME PLATED	1
21	XBOZH	96906	MS35333-36	WASHER,LOCK	4
22	XBOZZ	88044	AN515-C4-8	SCREW,RDH MACHINE	4
23	XBOZZ	60887	33840	HSG ASSY,R COVER	1
24	XBOZZ	78179	4014-20-00	WASHER,LOCK 1/4 EXTERNAL-INTERNAL TYPE LOCK WASHER NICKEL PLATED	3
25	XBOZZ	96906	MS35289-1	SCREW,HES HD CAP	3
26	XBOZZ	60887	71	SCREW,PH RDH SEMS 8-32 X 1/4 ROUND PHILLIPS HEAD EXTERNAL SEMS MACHINE SCREW STEEL CAD PLATED	2

SECTION II (1) ITEM NO	(2) SMR CODE	(3) FSCM	TM5-3610-256-24P (4) PART NUMBER	(5) DESCRIPTION AND USABLE ON CODE (UOC)	(6) QTY
27	XBHZZ	60887	37162	BRACKET,CONTROLLER	1
28	XBHZZ	12012	SL58UMCH	CONTROLLER	1
28	PAFZZ	60887	37765	CONTROLLER USED ON SERIAL NO 334 AND HIGHER	1
29	XBOZZ	88044	AN515-C4-8	SCREW,RDH MACHINE	4
30	XBOZZ	88044	MS35333-36	WASHER,LOCK	4
30	XDOZZ	08863	N4-2	STANDOFF USED ON SERIAL NO 334 AND HIGHER	2
31	PAFZZ	73559	TIGL51-6S-WH-NWH	SWITCH,PUSH	1
31	PAFZZ	73559	TIGL51-1L-WH-FN	SWITCH,PUSH USED ON SERIAL NO 334 AND HIGHER	1
32	PAFZZ	60887	33847	PLATE,CONTROL,SPEED	1
33	XAOZZ	96906	MS35333-42	WASHER,LOCK	1
34	XBOZZ	60887	33990	COVER,RIGHT	1
35	XBOZZ	56501	TY-232M	CABLE TIE,SHORT	2
36	XDOZZ	28520	SB-1500-21	BUSHING,SNAP	1
37	XBOZZ	60887	33957	ENDPLATE ASSY,LEFT	1
38	XBOZZ	56501	TY-232M	CABLE TIE,SHORT	2
39	XBOZZ	96906	MS35289-1	SCREW,HEXHEAD CAP	3
40	XBOZZ	78189	4014-20-00	WASHER,LOCK 1/4 EXTERNAL-INTERNAL TYPE LOCK WASHER NICKEL PLATED	3
41	XBOZZ	96906	MS35691-502	NUT,HEX JAM	1
42	XDFZZ	60887	37167	SWITCH,MAIN	1
43	PAOZZ	60887	37164	COVER,LEFT	1
44	XDOZZ	28520	SB-500-6	BUSHING,SNAP	1
45	XBOZZ	60887	59	SCREW,PH RDH SEMS 8-32 X 1/2 ROUND PHILLIPS HEAD EXTERNAL SEMS MACHINE SCREW STEEL CAD PLATED	1
46	XBOZZ	78189	4008-18-00	WASHER,LOCK #8 EXTERNAL-INTERNAL LOCK WASHER NICKEL PLATED	3
47	XBOZZ	88044	AN340-C8	NUT,HEX	1
48	PAOZZ	60887	33854	COVER,HOUSING,LEFT	1
49	XBOZZ	60887	407	SCREW,PH PNH SEMS 8-32 X 3/8 EXTERNAL SEMS TYPE 23 SELF TAPPING SCREW PHILLIPS PAN HEAD CAD OR NICKEL PLATED	2
50	PAOZZ	60887	33644	DOOR,MACHINE,LEFT	1
51	XBOZZ	94222	61-10-2-0	LATCH	1
52	XBOZZ	78189	3502-16-06-0551	WASHER,SPRING 5/8 X 9/32 X 0.015 STEEL SPRING WASHER	1
53	XBOZZ	74078	B33948-A TYPE C	.DECAL,NAMEPLATE	1
54	XBOZZ	60887	33537	TRAY ASSY,RCVG,COMP	1
55	PAOZZ	60887	33323	REFEED ASSEMBLY	1
56	XBOZZ	60887	23016-1	PIN	2
57	XBOZZ	60887	3095	WASHER,FLAT 13/64 ID X 7/16 OD X 0.032 STAINLESS STEEL FLAT WASHER	2
58	XBOZZ	88044	AN515-C8-12	SCREW,ROUND HEAD	2
59	XBOZZ	96906	MS20365-832A	NUT,HEX ELAS STOP	2
60	XBOZZ	78189	4008-18-00	WASHER,LOCK L,NICKEL PLATED	4
61	XBOZZ	60887	466	SCREW,PH PNH SEMS 8-32 X 1/2 EXTERNAL SEMS TYPE F SHEET METAL SCREW PHILLIPS ROUND HEAD CAD PLATED	4

SECTION II (1)	(2)	(3)	TM5-3610-256-24P (4)	(5)	(6)
ITEM NO	SMR CODE	FSCM	PART NUMBER	DESCRIPTION AND USABLE ON CODE (UOC)	QTY
62	XBOZZ	96906	MS20365-832A	NUT,ELASTIC STOP	4
63	XBOZZ	88044	AN515-C416-16	SCREW,RDH MACH	2
64	XBOZZ	60887	25211-1	SPRING,PAPER CUTTER	1
65	XBOZZ	28520	SB-1500-21	BUSHING,SNAP	2
66	XBOZZ	60887	240	SCREW,PH RDH SH MET 8-32 X 1/2 PHILLIPS ROUND HEAD SHEET METAL SCREW TYPE F STEEL CAD PLATED	2
67	XBOZZ	88044	AN340-C8	NUT,HEX	2
68	XBOZZ	60887	466	SCREW,PH PNH SEMS 8-32X1/2 EXTERNAL SEMS TYPE F SHEET METAL SCREW-PHILLIPS ROUND HEAD CAD PLATED	5
69	XBOZZ	60887	11242	WASHER,SST 3/16 ID X 7/16 OD X 0.065 STAINLESS STEEL FLAT WASHER	4
70	XBOZZ	94222	31-10-101-11	LATCH,PAPER ROLL	2
71	XBOZZ	60887	33522	FEEDBOARD	1
72	XBOZZ	88044	AN340-C416	NUT,HEX	2
73	XBOZZ	78189	4014-20-00	WASHER,LOCK 1/4 EXTERNAL-INTERNAL TYPE LOCK WASHER NICKEL PLATED	2
74	XBOZZ	60887	25213-1	PULLEY,SPRING	2
75	XBOZZ	60887	33087	BRACKET,SPRING RTNR	1
76	XBOZZ	60887	33218	BEAD CHAIN/RNG ASSY	1
77	XBOZZ	60887	33917	GUIDE,FEEDBOARD	1
78	XBOZZ	60887	235	SCREW,PH RDH SEMS 6-32 X 1/4 ROUND PHILLIPS HEAD SEMS EXTERNAL MACHINE SCREW STEEL CAD PLATED	2
79	XBOZZ	60887	33086	CUTTER,PAPER	1
80	XBOZZ	60887	33557	LABEL,FEED HERE	1
81	XBOZZ	60887	33523	GUIDE,PRINTER	1
82	XBHZZ	60887	33560	PICKOFF ASSY,COMPL	1
83	XBOZZ	60887	407	SCREW,PH PNH SEMS 8-32 X 3/8 EXTERNAL SEMS TYPE 23 SELF TAPPING SCREW PHILLIPS PAN HEAD CAD PLATED	4
84	XBOZZ	60887	524	SCREW,PH RDH SEMS 6-32 X 3/8 PHILLIPS PAN HEAD EXTERNAL SEMS TYPE F SHEET METAL SCREW STEEL CAD OR NICKEL PLATED	1
85	XBOZZ	6087	3293	WASHER,STEEL 7/32 ID X 7/8 OD X 1/ 16 STEEL FLAT WASHER CAD PLATED	1
86	XBOZZ	96906	MS15795-806	WASHER,FLAT	1
87	XBOZZ	60887	3268	ROLLPIN 1/8 X 9/16 ROLL PIN PLAIN FINISH	2
88	XBOZZ	60887	33514	COVER,SWITCH	1
89	XBOZZ	88044	AN515C4-10	SCREW,RDH MACHINE	1
90	PAFZZ	60887	33519	SWITCH,SENSITIVE	1
91	XBFFZ	60887	33515	BRACKET ASSY,SWITCH	1
92	XBOZZ	88044	AN340-C4	NUT,HEX	1
93	XBOZZ	60887	235	SCREW,PH RDH SEMS 6-32 X 1/4 ROUND PHILLIPS HEAD SEMS EXTERNAL MACHINE SCREW STEEL CAD PLATED	2
94	XBOZZ	00779	2-520181-2	TERMINAL,WIRE	1
95	XBOZZ	88044	AN515-C4-8	SCREW,RDH MACHINE	1
96	XBOZZ	60887	33520	COVER ASSY,PPR ROLL	1

SECTION II (1) ITEM NO	(2) SMR CODE	(3) FSCM	TM5-3610-256-24P (4) PART NUMBER	(5) DESCRIPTION AND USABLE ON CODE (UOC)	(6) QTY
97	XBOZZ	60887	33085	BAR,PAPER ROLL	1
98	XBOZZ	60887	23016-1	PIN,RECEIVING TRAY	4
99	XBOZZ	60887	3095	WASHER,FLAT 13/64 ID X 7/16 OD X 0.032 STAINLESS STEEL FLAT WASHER	2
100	XBOZZ	88044	AN515-C8-12	SCREW,RDH MACHINE	4
101	XBOZZ	60887	3268	ROLLPIN 1/8 X 9/16 ROLL PIN PLAIN FINISH	4
102	XBOZZ	60887	33914	SCREW ASSY,SHLDR	1
103	XBOZZ	60887	33321	COVER,REAR,WELDMENT	1
104	XBOZZ	60887	33335	LABEL	1
105	XBOZZ	60887	33329	LABEL	1
106	XDOZZ	60887	33336	LABEL,AUTOXFMR	1
107	XBOZZ	60887	3233	SCREW,PH TRUSS HEAD 10-24 X 3/8 PHILLIPS TRUSS HEAD STEEL EXTERNAL SEMS MACHINE SCREW CHROME PLATED	4
108	XBHZZ	60887	33597	BRKT,SPRT,DEV TANK	2
109	XDOZZ	78179	4014-20-00	WASHER,LOCK 1/4 EXTERNAL-INTERNAL TYPE LOCK WASHER, NP USED ON SERIAL NO 334 AND HIGHER	3
110	XBOZZ	60887	406	SCREW,PH RDH SEMS 10-24 X 1/2 ROUND PHILLIPS HEAD TYPE F EXTERNAL SEMS SELF TAPPING SCREW STEEL CAD PLATED	4
110	XDOZZ	96906	MS35289-1	SCREW,CAP USED ON SERIAL NO 334 AND HIGHER	3
111	XBOZZ	56501	TY-232M	CABLE TIE	7
112	XBOZZ	60887	407	SCREW,PH PNH SEMS 8-32 X 3/8 EXTERNAL SEMS TYPE 23 SELF TAPPING SCREW PHILLIPS PAN HEAD CAD PLATED PLATE	7
113	XBOZZ	59730	TC-828	CABLE TIE,SHORT	1
114	XBOZZ	56501	TY-232M	SCREW,PH PNH SEMS 8-32 X 3/8	1
115	XBOZZ	60887	407	EXTERNAL SEMS TYPE 23 SELF TAPPING SCREW PHILLIPS PAN HEAD CAD PLATED	1
116	XBOZZ	60887	33897	BRACKET,CABLE CLAMP	1
117	XBOZZ	60887	407	SCREW,PH PNH SEMS 8-32 X 3/8 EXTERNAL SEMS TYPE 23 SELF TAPPING SCREW PHILLIPS PAN HEAD CAD PLATED	1
118	XBOZZ	56501	TY-232M	CABLE TIE,SHORT	1
119	XBOZZ	60887	33921	BRACKET,CABLE CLAMP	1
120	XBOZZ	60887	407	SCREW,PH PNH SEMS 8-32 X 3/8 EXTERNAL SEMS TYPE 23 SELF TAPPING SCREW PHILLIPS PAN HEAD CAD PLATED	1
121	XBOZZ	60887	33897	BRACKET,CABLE CLAMP	1
122	XBOZZ	56501	TY-232M	CABLE TIE,SHORT	1
123	XBOZZ	60887	407	SCREW,PH PNH SEMS 8-32 X 3/8 EXTERNAL SEMS TYPE 23 SELF TAPPING SCREW PHILLIPS PAN HEAD CAD PLATED	1
124	XBOZZ	56501	TY-232M	CABLE TIE	1
125	XBOZZ	60887	33897	BRACKET,CABLE CLAMP	1
126	XBOZZ	96906	MS35289-5	SCREW,HEX HEAD CAP	4
127	XBOZZ	78189	4014-20-00	WASHER,LOCK 1/4 EXTERNAL-INTERNAL	4

SECTION II				TM5-3610-256-24P	
(1)	(2)	(3)	(4)	(5)	(6)
ITEM NO	SMR CODE	FSCM	PART NUMBER	DESCRIPTION AND USABLE ON CODE (UOC)	QTY
128	XBOZZ	60887	33255	TYPE LOCK WASHER NICKEL PLATED	4
129	XBOZZ	60887	33326	FOOT,BASE	1
130	XBOZZ	60887	3061	BASE ASSY,MACHINE	2
				SCREW,PDH SELF-TAPP 2-56 X 3/16	
				ROUND HEAD 18-8 STAINLESS STEEL	
				SHEET METAL SELF TAPPING SCREW TYPE	
				F	
131	XBOZZ	60887	33337	NAMEPLATE	1
				END OF FIGURE	

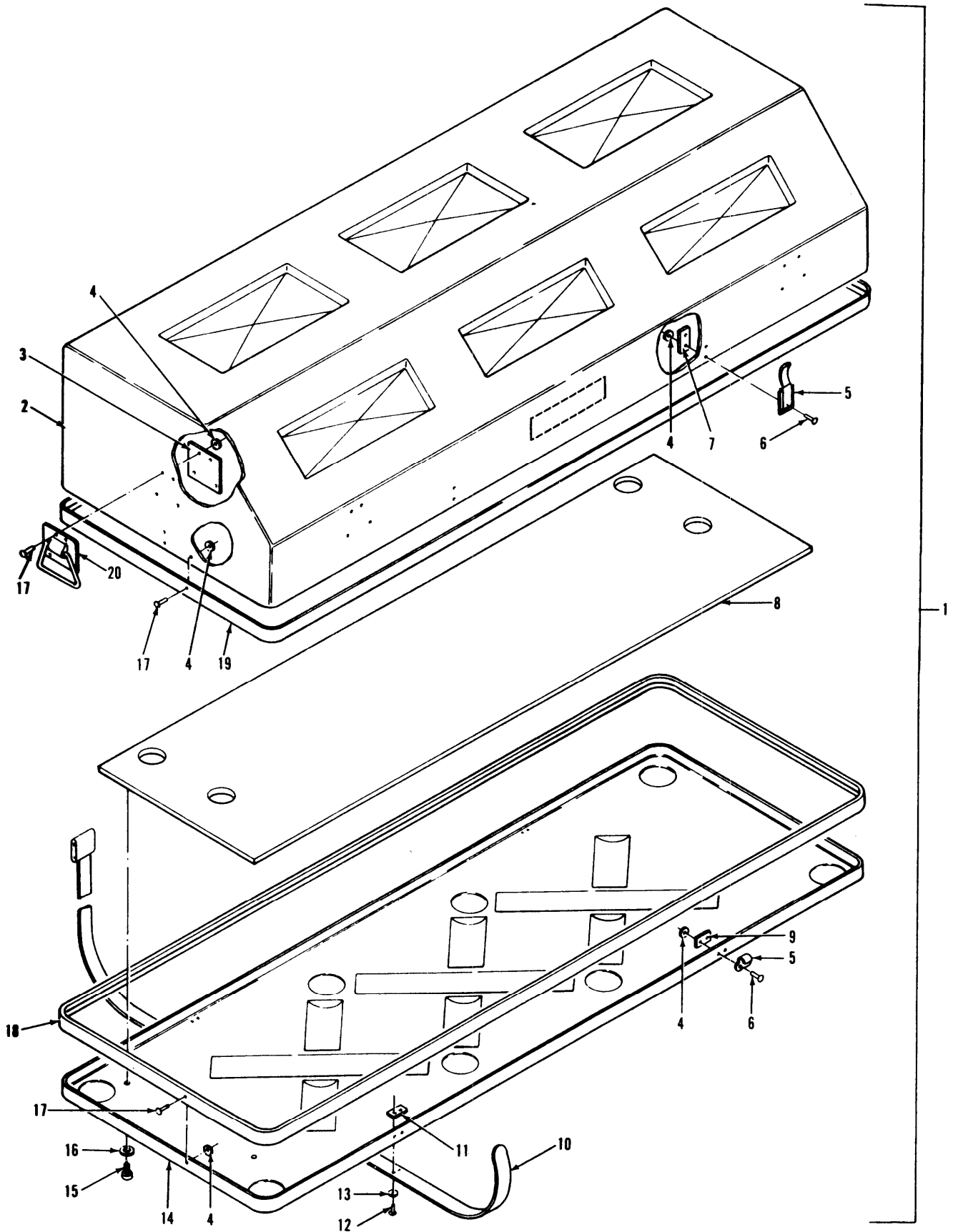


Figure 6. Carrying Case Assembly (Sheet 1 of 2)

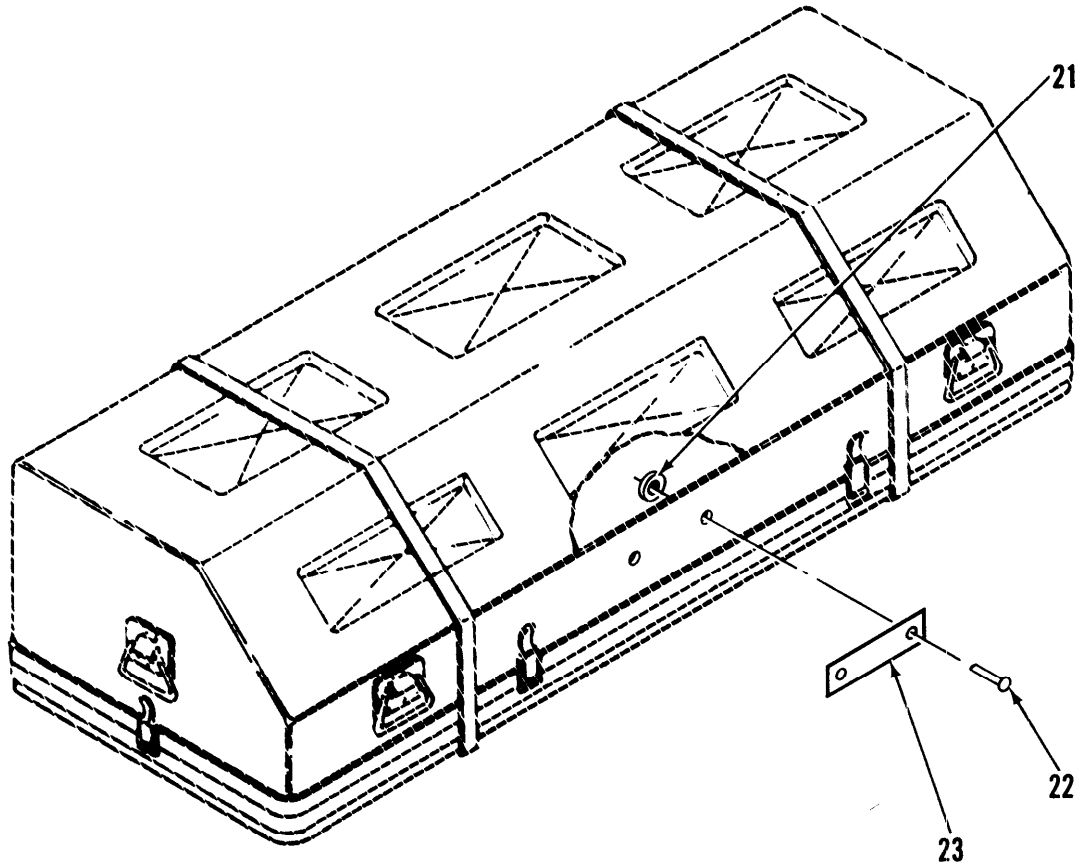


Figure 6. Carrying Case Assembly (Sheet 2 of 2)

SECTION II (1)	ITEM (2)	(3)	TM5-3610-256-24P (4)	(5)	(6)
NO	SMR CODE	FSCM	PART NUMBER	DESCRIPTION AND USABLE ON CODE (UOC)	QTY
GROUP 06 CARRYING CASE ASSEMBLY					
FIG. 6 CARRYING CASE ASSEMBLY.					
1	XBHZF	81337	5-7-173	CASE CARRYING, COPIE	1
2	XBHZZ	81337	5-7-174	.COVER	1
3	XBHZZ	81337	5-7-180-1	.BACKUP PLATE, HANDLE	6
4	XBHZZ	96906	MS14151-2	.WASHER, FLAT	96
5	XBHZZ	01570	2200-N-2	.DRAWBOLT, TOGGLE	6
6	XBHZZ	96906	MS16535-314	.RIVET, TUBULAR	24
7	XBHZZ	81337	5-7-180-2	.BACKUP PLATE, LATCH	6
8	XBHZZ	81337	5-7-176	.SUPPORT	1
9	XBHZZ	81337	5-7-180-3	.BACKUP PLATE, STRIKE	6
10	XBHZZ	81337	5-7-179	.STRAP ASSEMBLY	2
11	XBHZZ	81337	5-7-180-4	.BACKUP PLATE, STRAP	4
12	XBHZZ	96906	MS16535-125	.RIVET, TUBULAR	8
13	XBHZZ	96906	MS15795-804	.WASHER, FLAT	16
14	XBHZZ	81337	5-7-175	.BASE	1
15	XBHZZ	96906	MS51861-65C	.SCREW, TAPPING-THD	4
16	XBHZZ	96906	MS14151-3	.WASHER, FLAT	4
17	XBHZZ	96906	MS16535-309	.RIVET, TUBULAR	72
18	XBHZZ	81377	396CA	.VALENCE, MALE	1
19	XBHZZ	81377	396CA	.VALENCE, FEMALE	1
20	XBHZZ	01570	195-Z-2	.WIRE HANDLE & PLATE	6
21	XDFZZ	60887	25448	SPACER USED ON SERIAL NO 334 AND HIGHER	2
22	XDFZZ	60887	643	RIVET USED ON SERIAL NO 334 AND HIGHER	2
23	XDFZZ	60887	33334	LABEL, COPIER CASE USED ON SERIAL NO 334 AND HIGHER	1

END OF FIGURE

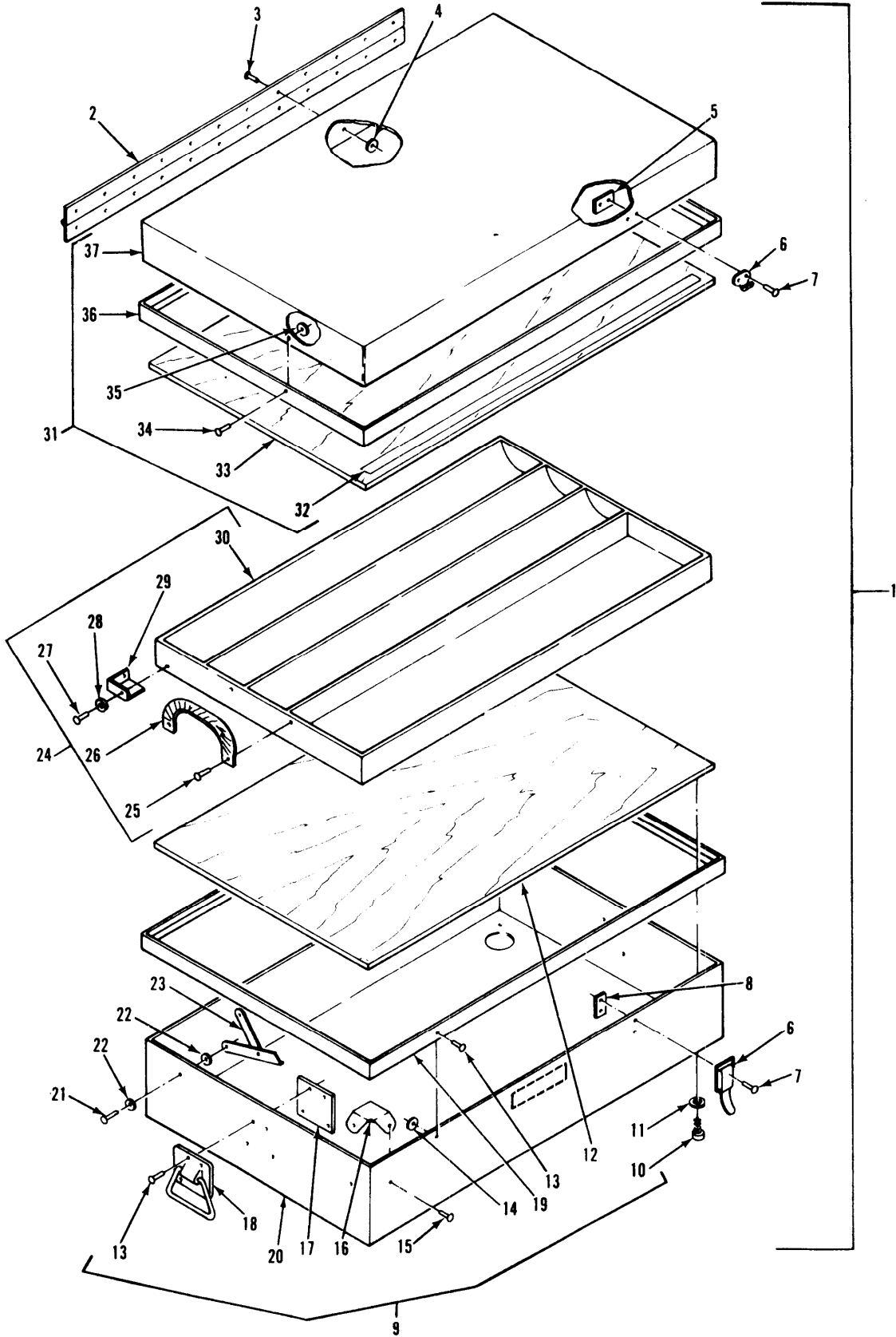


Figure 7. Supply Case Assembly (Sheet 1 of 2)

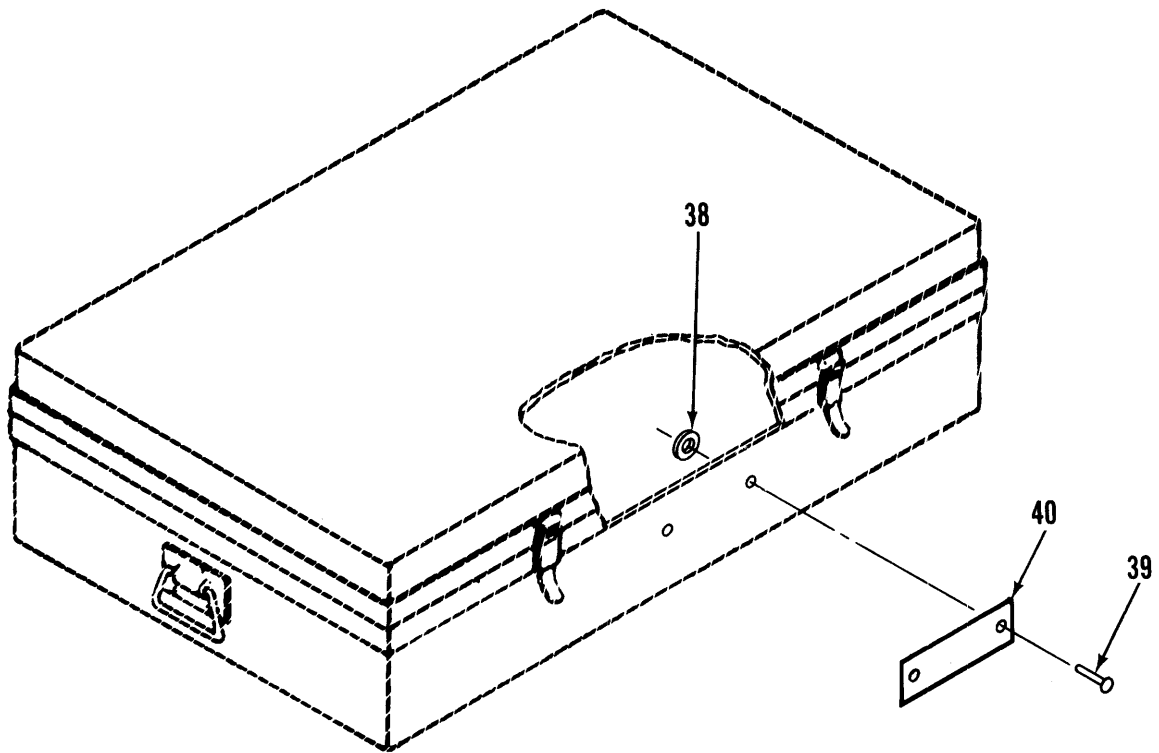


Figure 7. Supply Case Assembly (Sheet 2 of 2)

SECTION II (1) ITEM NO	(2) SMR CODE	(3) FSCM	TM5-3610-256-24P (4) PART NUMBER	(5) DESCRIPTION AND USABLE ON CODE (UOC)	(6) QTY
GROUP 07 SUPPLY CASE ASSEMBLY					
FIG. 7 SUPPLY CASE ASSEMBLY.					
1	XBHZZ	81337	5-7-181	CASE, CARRYING, COPIE	1
2	XBHZZ	81337	5-7-186	.HINGE	1
3	XBHZZ	96906	MS16535-311	.RIVET, TUBULAR	24
4	XBHZZ	96906	MS14151-2	.WASHER, FLAT	24
5	XBHZZ	81337	5-7-185-1	.BACKUP PLATE, LATCH	2
6	XBHZZ	01570	2200-N-2	.DRAWBOLT, TOGGLE	2
7	XBHZZ	96906	MS16535-314	.RIVET, TUBULAR	8
8	XBHZZ	81337	5-7-185-2	.BACKUP PLATE, STRIKE	2
9	XBHZZ	81337	5-7-182	.CASE ASSEMBLY	
10	XBHZZ	96906	MS51861-65C	..SCREW, TAPPING-THD	4
11	XBHZZ	96906	MS14151-3	..WASHER, FLAT	4
12	XBHZZ	81337	5-7-182-2	..PANEL, SUPPORT	1
13	XBHZZ	96906	MS16535-309	..RIVET, TUBULAR	23
14	XBHZZ	96906	MS14151-2	..WASHER, FLAT	15
15	XBHZZ	96906	MS16535-307	..RIVET, TUBULAR	8
16	XBHZZ	81377	8301	..BRACKET, TRAY SPRT	4
17	XBHZZ	81337	5-7-185-3	..BACKUP PLATE, HANDLE	2
18	XBHZZ	01570	195-Z-2	..WIRE HANDLE & PLATE	2
19	XBHZZ	81377	396CA	..VALENCE, FEMALE	1
20	XBHZZ	81337	5-7-182-1	..BODY	1
21	XBHZZ	96906	MS20613	.RIVET, SOLID-UNIV HD	4
22	XBHZZ	96906	MS15795-841	.WASHER, FLAT	26
23	XBHZZ	74427	43NP	.SUPPORT	2
24	XBHZZ	81337	5-7-184	.TRAY, ASSEMBLY	1
25	XBHZZ	81337	5-7-184-4	..RIVET	2
26	XBHZZ	23055	W333, NYLON	..WEBBING, NYLON, 1"	2
27	XBHZZ	96906	MS16535-309	..RIVET	8
28	XBHZZ	96906	MS14151-2	..WASHER, FLAT	8
29	XBHZZ	81337	8015	..CORNER STAMPING	4
30	XBHZZ	81337	5-7-184-3	..MOLDING, #20 TOP	V
31	XBHZZ	81337	5-7-183	.COVER ASSEMBLY	1
32	XBOZZ	04963	4693	..ADHESIVE	V
33	XBHZZ	81337	5-7-183-2	..PANEL, SUPPORT	1
34	XBHZZ	96906	MS16535-309	..RIVET, TUBULAR	15
35	XBHZZ	96906	MS14151-2	..WASHER, FLAT	15
36	XBHZZ	81377	396CA	..VALENCE, MALE	1
37	XBHZZ	81337	5-7-183-1	..BODY	1
38	XDFZZ	60887	25448-1C	SPACER USED ON SERIAL NO 334 AND HIGHER	2
39	XDFZZ	60887	643	RIVET USED ON SERIAL NO 334 AND HIGHER	2
40	XDFZZ	60887	33338	LABEL, SUPPLY CASE USED ON SERIAL NO 334 AND HIGHER	1

END OF FIGURE

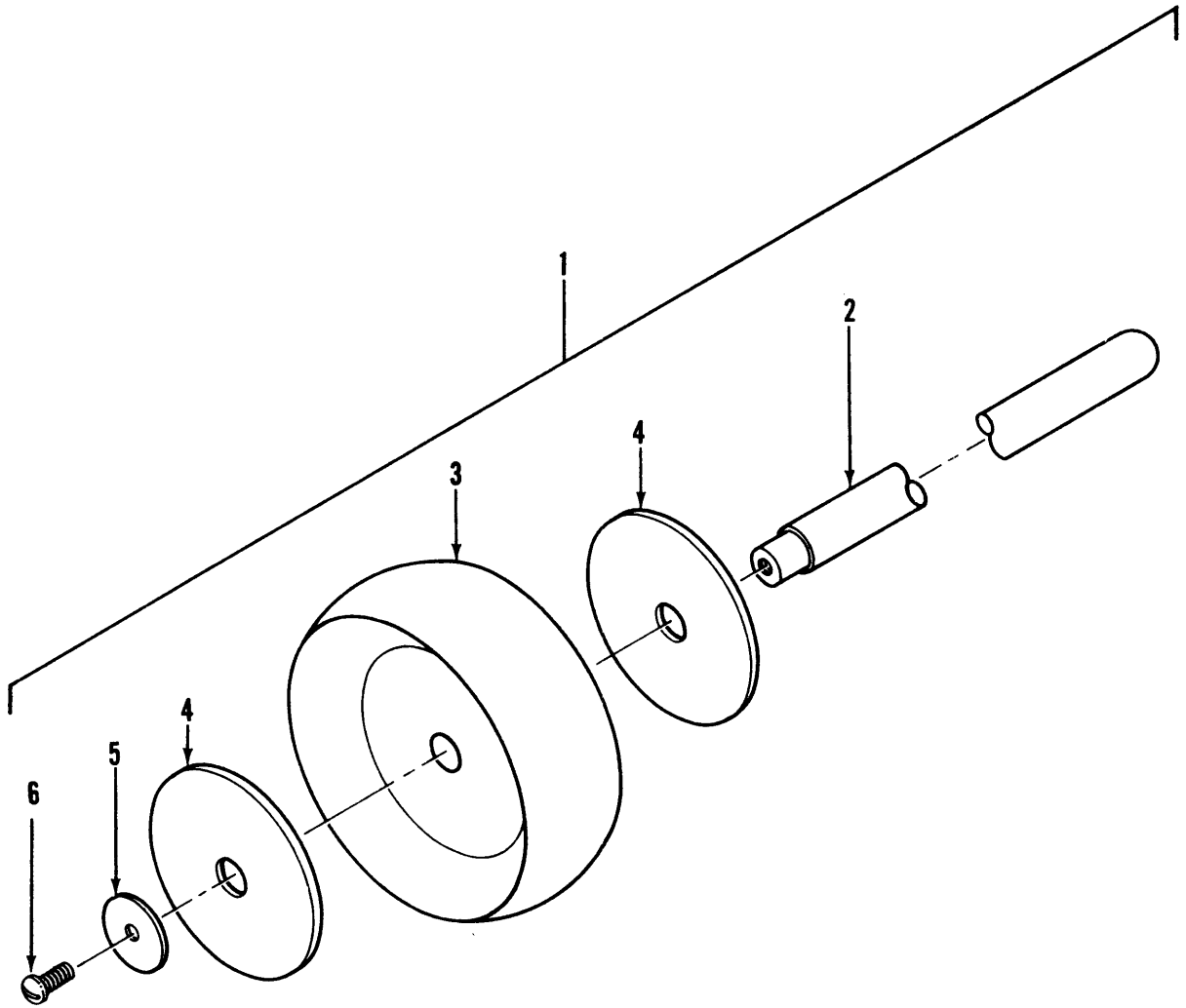


Figure 8. Special Tools

SECTION III				TM5-3610-256-24P	
(1)	(2)	(3)	(4)	(5)	(6)
ITEM NO	SMR CODE	FSCM	PART NUMBER	DESCRIPTION AND USABLE ON CODE (UOC)	QTY
GROUP 08 SPECIAL TOOLS					
FIG. 8 SPECIAL TOOLS.					
1	PAOZZ	60887	33647	SWAB,CLEANING,CYLIN	
2	XBOZZ	60887	33649	.HANDLE,CYL CLEANER	
2	XDOZZ	60887	38484	.HANDLE,CYL CLEANER USED ON SERIAL NO 334 AND HIGHER	
3	XBOZZ	60887	33648	.SWAB,CYL CLEANER	
4	XBOZZ	60887	33650	.PLATE,CYL CLEANED	
5	XBOZZ	60887	3303	.RING,GRIP	
5	XDOZZ	60887	38485	.WASHER USED ON SERIAL NO 334 AND HIGHER	
6	XDOZZ	60887	3334	.SCREW # 10 X 1/2 SHEET METAL SCREW TYPE A SELF BINDING STEEL CAD PLATED, USED ON SERIAL NO 334 AND HIGHER	
END OF FIGURE					

CROSS-REFERENCE INDEXES

NATIONAL STOCK NUMBER INDEX

STOCK NUMBER	FIG	ITEM	STOCK NUMBER	FIG	ITEM
5920-00-227-6179	1	7			
5920-00-243-3787	1	5			
5920-00-263-2192	1	7			
5325-00-599-9270	1	22			
5905-01-171-7749	5	1			
6250-01-175-5530	1	11			
3610-01-176-0321	2	31			
3610-01-176-0325	5	43			
3610-01-176-0326	3	68			
3610-01-176-0327	3	67			
3610-01-176-0328	3	21			
3610-01-176-0329	3	70			
3610-01-176-0330	5	55			
3610-01-176-0331	3	25			
3610-01-176-0332	3	24			
3610-01-176-0333	4	1			
3610-01-176-0334	4	16			
3610-01-176-0335	2	23			
3610-01-176-0336	2	12			
3610-01-176-0337	2	11			
3610-01-176-0338	8	1			
6105-01-176-0373	2	18			
3610-01-176-2423	5	32			
3610-01-176-2428	5	2			
6240-01-176-4327	3	79			
5950-01-176-6646	1	15			
5930-01-176-7217	5	90			
5930-01-176-8891	5	6			
5930-01-176-9005	5	31			
3020-01-179-6320	3	26			
3020-01-179-6581	4	6			
3020-01-179-6582	3	9			
3610-01-180-6130	5	50			
3610-01-180-6131	5	48			
5330-01-180-7722	3	17			
3120-01-180-8022	3	4			
4320-01-180-8023	2	14			
4140-01-180-9024	3	63			
6250-01-180-9025	3	71			
3610-01-180-9038	2	7			
5945-01-181-4742	1	25			
4520-01-181-9369	3	18			
4820-01-182-9181	2	6			
3130-01-185-0714	3	16			
5935-01-190-1210	1	8			

CROSS-REFERENCE INDEXES

PART NUMBER INDEX

FSCM	PART NUMBER	STOCK NUMBER	FIG	ITEM
88044	AN340-C10		3	6
			3	20
			5	18
88044	AN340-C4		5	92
88044	AN340-C416		3	11
			3	59
			5	72
88044	AN340-C6		3	53
88044	AN340-C8		2	20
			3	49
			5	16
			5	47
			5	67
88044	AN345-C10		2	33
88044	AN500-4-R8		3	73
88044	AN515-C4-8		5	22
			5	29
			5	95
88044	AN515-C416-16		5	63
88044	AN515-C416-24		3	55
88044	AN515-C8-12		5	58
			5	100
88044	AN515C-8-R6		1	23
			3	47
88044	AN515C-8-6		1	23
			3	47
88044	AN515C4-10		5	89
88044	AN960-C416		3	8
88044	AN960-C516		3	28
			4	3
88044	AN960-816L		4	24
74048	B33948-A TYPE C		5	53
81349	F02B250V1-1/2A	5920-00-227-6179	1	7
81349	F02B250V8-10A	5920-00-263-2192	1	7
81349	F03A250V10AS	5920-00-243-3787	1	5
00779	GR-47		3	48
11083	G51H-B		4	15
62119	JA2M139N	6105-01-176-0373	2	18
77342	KUP 14 AE 5-120V	5945-01-181-4742	1	25
14112	K09128-0009		1	31
14112	K5464-1		1	30
14112	K5465		1	29
14112	K5468-005		1	31
96906	MS14151-2		6	4
			7	4
			7	14
			7	28
			7	35
96906	MS14151-3		6	16
			7	11
96906	MS15795-804		6	13

CROSS-REFERENCE INDEXES

PART NUMBER INDEX

FSCM	PART NUMBER	STOCK NUMBER	FIG	ITEM
96906	MS15795-806		5	86
96906	MS15795-841		7	22
96906	MS16535-125		6	12
96906	MS16535-307		7	15
96906	MS16535-309		6	17
			7	13
			7	27
			7	34
96906	MS16535-311		7	3
96906	MS16535-314		6	6
			7	7
96906	MS16633-25		3	44
96906	MS16637-1		3	30
96906	MS16637-19		3	2
			3	27
			4	2
96906	MS16637-4		3	40
96906	MS20365-832A		5	59
			5	62
96906	MS20613		7	21
96906	MS28775-012		2	30
96906	MS35289-1		5	25
			5	39
			5	110
96906	MS35289-10		3	41
96906	MS35289-5		5	126
96906	MS35333-36		5	21
			5	30
96906	MS35333-42		5	33
96906	MS35333-46		3	52
96906	MS35333-60		3	12
			3	39
96906	MS35335-31		3	83
96906	MS35691-502		3	5
			5	41
96906	MS51861-65C		6	15
			7	10
96906	MS51957-48		3	81
14726	NP-5115T		1	14
			1	17
14726	NP5663		1	13
			1	18
00779	N3MTB-2		4	19
08863	N4-2		5	30
44655	OE5611		1	51
			1	67
98775	RCF-2S102-C61	6250-01-175-5530	1	11
00779	R10480		4	11
14112	R16C08H006P		1	32
01226	S-54B		3	10
28520	SB-1500-21		5	36

CROSS-REFERENCE INDEXES

PART NUMBER INDEX

FSCM	PART NUMBER	STOCK NUMBER	FIG	ITEM
28520	SB-1500-21		5	65
28520	SB-500-6		5	44
12012	SL58UMCH		5	28
59730	TC-828		1	42
			1	59
			5	113
73559	TIGL51-1L-WH-FN		5	31
73559	TIGL51-6S-WH-NWH	5930-01-176-9005	5	31
56501	TY-232M		1	39
			1	40
			1	57
			1	71
			2	8
			5	35
			5	38
			5	111
			5	114
			5	118
			5	122
			5	124
50139	TYPE EB		1	55
			1	64
14112	V01156AE80		1	26
14112	V01156AI83		1	26
23055	W333,NYLON		7	26
28081	Z3T-00300-061		5	17
76385	Z3029 TYPE RC	5325-00-599-9270	1	22
27264	02-09-1102		1	60
27264	02-09-1117		1	48
27264	02-09-2101		1	61
			2	17
			3	65
27264	03-09-1021		1	43
27264	03-09-2041		1	46
60887	10212-1Z		1	16
60887	11242		5	69
60887	11268		3	74
27264	1189-AT		1	60
27264	1190-T		1	61
			3	65
27264	1292R		1	38
27264	1381-AT		1	48
60887	150090		1	3
27264	1545P		2	16
			3	64
27264	1545R		1	43
01570	195-Z-2		6	20
			7	18
00779	2-520181-2		1	53
			5	94
00779	2-520183-2		1	36

CROSS-REFERENCE INDEXES

PART NUMBER INDEX

FSCM	PART NUMBER	STOCK NUMBER	FIG	ITEM
00779	2-520183-2		1	70
01570	2200-N-2		6	5
			7	6
60887	22110-1		3	56
60887	23016-1		5	56
			5	98
60887	235		5	78
			5	93
60887	240		5	66
60887	243		1	9
60887	245		1	27
60887	25211-1		5	64
60887	25213-1		5	74
60887	253		3	76
			5	15
60887	25448		6	21
60887	25448-1C		7	38
60887	256149		1	54
			1	69
65289	261-202	5930-01-176-8891	5	6
60887	26236-1		3	57
60887	262549		1	56
			1	63
60887	262554		1	53
			1	65
60887	262556		1	45
28520	2683		1	19
60887	2953		3	46
00779	3-350819-2		1	37
00779	3-520132-2		1	44
60887	3015		4	23
60887	30150-1		3	60
60887	30153		1	20
60887	3039		3	22
60887	3061		5	130
60887	30943		5	1
60887	3095		2	34
			5	57
			5	99
94222	31-10-101-11		5	70
60887	3176		3	42
60887	3215		3	15
60887	3215-1B		3	15
60887	3224		3	32
60887	3230		4	18
60887	32321-1		3	58
60887	3233		5	20
			5	107
60887	3236		2	2
			2	24
60887	3268		5	87

CROSS-REFERENCE INDEXES

PART NUMBER INDEX

FSCM	PART NUMBER	STOCK NUMBER	FIG	ITEM
60887	3268		5	101
60887	3278		4	27
60887	3293		5	85
60887	33026	6240-01-176-4327	3	79
60887	3303		8	5
60887	33063		3	62
60887	33070		3	35
60887	33085		5	97
60887	33086		5	79
60887	33087		5	75
60887	33147		3	23
60887	33154	6250-01-180-9025	3	71
60887	33188		1	3
60887	33212		3	50
60887	33218		5	76
60887	33245	3610-01-176-0331	3	25
60887	33253		2	29
60887	33255		5	128
60887	33257		2	25
60887	33260		2	26
60887	33264		2	28
60887	33269		2	27
60887	33271	3610-01-176-0337	2	11
60887	33281	3610-01-176-0321	2	31
60887	33285		2	11
60887	33304		1	33
60887	33305		1	1
60887	33306		1	2
60887	33309	5935-01-190-1210	1	8
60887	33321		5	103
60887	33323	3610-01-176-0330	5	55
60887	33326		5	129
60887	33329		5	105
60887	33331	5950-01-176-6646	1	15
60887	33334		6	23
60887	33335		5	104
60887	33336		5	106
60887	33337		5	131
60887	33338		7	40
60887	33339		3	26
60887	3334		8	6
60887	33343		1	33
60887	33514		5	88
60887	33515		5	91
60887	33519	5930-01-176-7217	5	90
60887	33520		5	96
60887	33522		5	71
60887	33523		5	81
60887	33537		5	54
60887	33557		5	80
60887	33560		5	82

CROSS-REFERENCE INDEXES

PART NUMBER INDEX

FSCM	PART NUMBER	STOCK NUMBER	FIG	ITEM
60887	33597		5	108
60887	33626	3610-01-176-0336	2	12
60887	33632		3	43
60887	33633		3	38
60887	33634		3	37
60887	33643		5	4
60887	33644	3610-01-180-6130	5	50
60887	33647	3610-01-176-0338	8	1
60887	33648		8	3
60887	33649		8	2
60887	33650		8	4
60887	33667	3610-01-176-0334	4	16
60887	33697		2	39
60887	33698		2	19
60887	33700		2	36
60887	33701		2	15
60887	33702	4320-01-180-8023	2	14
60887	33703	3610-01-176-0335	2	23
60887	33729		4	14
60887	33825		3	84
60887	33831		3	78
60887	33835		2	9
60887	33840		5	23
60887	33847	3610-01-176-2423	5	32
60887	33851		3	72
60887	33854	3610-01-180-6131	5	48
60887	33868	5330-01-180-7722	3	17
60887	33874		1	4
60887	33882		3	54
60887	33897		5	116
			5	121
			5	125
60887	33908	4820-01-182-9181	2	6
60887	33914		5	102
60887	33917		5	77
60887	33920		3	33
60887	33921		5	119
60887	33944	3610-01-176-0332	3	24
60887	33950	3020-01-179-6581	4	6
60887	33953	3020-01-179-6582	3	9
60887	33954		3	61
60887	33957		5	37
60887	33958	3610-01-176-2428	5	2
60887	33960	3610-01-176-0328	3	21
60887	33961	3610-01-176-0333	4	1
60887	33962		4	12
60887	33965		4	26
60887	33968		4	21
60887	33969		4	17
60887	33976	4520-01-181-9369	3	18
60887	33977	3610-01-176-0326	3	68

CROSS-REFERENCE INDEXES

PART NUMBER INDEX

FSCM	PART NUMBER	STOCK NUMBER	FIG	ITEM
60887	33978	3610-01-176-0327	3	67
60887	33979		4	10
60887	33984		3	77
60887	33985	3610-01-176-0329	3	70
60887	33990		5	34
60887	3419		3	13
60887	34307	3610-01-180-9038	2	7
60887	34696		4	8
60887	3473		3	82
75915	348-8-7-1		1	6
78189	3502-16-06-0551		5	3
			5	52
60887	35356		1	46
60887	356		3	75
60887	36600		1	34
60887	37138		3	31
60887	37139	3120-01-180-8022	3	14
60887	37154		1	62
60887	37162		5	27
60887	37163	5905-01-171-7749	5	1
60887	37164	3610-01-176-0325	5	43
60887	37167		5	42
60887	37173		3	1
60887	37174	3020-01-179-6320	3	26
60887	37175		1	21
60887	37368		5	11
60887	37536		5	19
60887	37729		3	1
60887	37740		3	3
60887	37765		5	28
60887	38219		2	9
60887	38292		2	12
60887	38484		8	2
60887	38485		8	5
81377	396CA		6	18
			6	19
			7	19
			7	36
60887	400037		4	4
60887	400037-1		3	29
78189	4006-14-00		5	12
78189	4008-18-00		1	24
			2	21
			5	14
			5	46
			5	60
78189	4010-18-00		1	28
			2	32
			3	7
			3	19
78179	4014-20-00		5	24

CROSS-REFERENCE INDEXES

PART NUMBER INDEX

FSCM	PART NUMBER	STOCK NUMBER	FIG	ITEM
78189	4014-20-00		5	40
			5	73
			5	109
			5	127
31368	404		4	5
60887	406		5	110
60887	407		1	10
			1	12
			1	41
			1	58
			2	5
			2	38
			5	13
			5	49
			5	83
			5	112
			5	115
			5	117
			5	120
			5	123
60887	409		3	34
			3	36
60887	416		3	80
74427	43NP		7	23
60887	466		3	69
			5	61
			5	68
04963	4693		7	32
60887	47431	3130-01-185-0714	3	16
60887	48807		5	7
81337	5-7-173		6	1
81337	5-7-174		6	2
81337	5-7-175		6	14
81337	5-7-176		6	8
81337	5-7-179		6	10
81337	5-7-180-1		6	3
81337	5-7-180-2		6	7
81337	5-7-180-3		6	9
81337	5-7-180-4		6	11
81337	5-7-181		7	1
81337	5-7-182		7	9
81337	5-7-182-1		7	20
81337	5-7-182-2		7	12
81337	5-7-183		7	31
81337	5-7-183-1		7	37
81337	5-7-183-2		7	33
81337	5-7-184		7	24
81337	5-7-184-3		7	30
81337	5-7-184-4		7	25
81337	5-7-185-1		7	5
81337	5-7-185-2		7	8

FSCM	PART NUMBER	FIG	ITEM
81337	5-7-185-3	7	17
81337	5-7-186	7	2
60887	509	5	9
79136	5100-112	4	25
79136	5115-12	2	37
60887	524	5	10
		5	84
00779	52929-1	1	50
		1	66
60887	53260	2	1
60887	53440	1	49
60887	53510	2	4
60887	53531	1	52
		1	68
60887	53566	1	35
		1	72
60887	53601	2	13
		4	7
60887	53652	4	9
60887	53718	4	22
60887	53739	1	47
60887	53742	2	10
60887	53837	4	9
79136	5555-31-H	4	20
79136	5555-62	3	45
60887	59	2	35
		5	45
94222	61-10-2-0	5	5
		5	51
27901	63191	4	13
27901	64014	2	3
60887	643	6	22
		7	39
60887	69	2	22
60887	71	3	51
		5	26
60887	72	3	66
60887	758044	3	4
60887	758402	5	8
81337	8015	7	29
81377	8301	7	16
16327	9C946 TYPE U21	3	6
	4140-01-180-9024		

CROSS-REFERENCE INDEXES

FIG	ITEM	FIGURE AND ITEM NUMBER INDEX		PART NUMBER
		STOCK NUMBER	FSCM	
1	1		60887	33305
1	2		60887	33306
1	3		60887	150090
1	3		60887	33188
1	4		60887	33874
1	5	5920-00-243-3787	81349	F03A250V10AS
1	6		75915	348-8-7-1
1	7	5920-00-227-6179	81349	F02B250V1-1/2A
1	7	5920-00-263-2192	81349	F02B250V8-10A
1	8	5935-01-190-1210	60887	33309
1	9		60887	243
1	10		60887	407
1	11	6250-01-175-5530	98775	RCF-2S102-C61
1	12		60887	407
1	13		14726	NP5663
1	14		14726	NP-5115T
1	15	5950-01-176-6646	60887	33331
1	16		60887	10212-1Z
1	17		14726	NP-5115T
1	18		14726	NP5663
1	19		28520	2683
1	20		60887	30153
1	21		60887	37175
1	22	5325-00-599-9270	76385	Z3029 TYPE RC
1	23		88044	AN515C-8-R6
1	23		88044	AN515C-8-6
1	24		78189	4008-18-00
1	25	5945-01-181-4742	77342	KUP 14 AE 5-120V
1	26		14112	V01156AE80
1	26		14112	V01156AI83
1	27		60887	245
1	28		78189	4010-18-00
1	29		14112	K5465
1	30		14112	K5464-1
1	31		14112	K09128-0009
1	31		14112	K5468-005
1	32		14112	R16C08H006P
1	33		60887	33304
1	33		60887	33343
1	34		60887	36600
1	35		60887	53566
1	36		00779	2-520183-2
1	37		00779	3-350819-2
1	38		27264	1292R
1	39		56501	TY-232M
1	40		56501	TY-232M
1	41		60887	407
1	42		59730	TC-828
1	43		27264	03-09-1021
1	43		27264	1545R
1	44		00779	3-520132-2

CROSS-REFERENCE INDEXES

FIG	ITEM	FIGURE AND ITEM NUMBER INDEX		PART NUMBER
		STOCK NUMBER	FSCM	
1	45		60887	262556
1	46		27264	03-09-2041
1	46		60887	35356
1	47		60887	53739
1	48		27264	02-09-1117
1	48		27264	1381-AT
1	49		60887	53440
1	50		00779	52929-1
1	51		44655	OE5611
1	52		60887	53531
1	53		00779	2-520181-2
1	53		60887	262554
1	54		60887	256149
1	55		50139	TYPE EB
1	56		60887	262549
1	57		56501	TY-232M
1	58		60887	407
1	59		59730	TC-828
1	60		27264	02-09-1102
1	60		27264	1189-AT
1	61		27264	02-09-2101
1	61		27264	1190-T
1	62		60887	37154
1	63		60887	262549
1	64		50139	TYPE EB
1	65		60887	262554
1	66		00779	52929-1
1	67		44655	OE5611
1	68		60887	53531
1	69		60887	256149
1	70		00779	2-520183-2
1	71		22421	TY-232M
1	72		60887	53566
2	1		60887	53260
2	2		60887	3236
2	3		27901	64014
2	4		60887	53510
2	5		60887	407
2	6	4820-01-182-9181	60887	33908
2	7	3610-01-180-9038	60887	34307
2	8		56501	TY-232M
2	9		60887	33835
2	9		60887	38219
2	10		60887	53742
2	11		60887	33285
2	11	3610-01-176-0337	60887	33271
2	12		60887	38292
2	12	3610-01-176-0336	60887	33626
2	13		60887	53601
2	14	4320-01-180-8023	60887	33702
2	15		60887	33701

CROSS-REFERENCE INDEXES

FIG	ITEM	FIGURE AND ITEM NUMBER INDEX		PART NUMBER
		STOCK NUMBER	FSCM	
2	16		27264	1545P
2	17		27264	02-09-2101
2	18	6105-01-176-0373	62119	JA2M139N
2	19		60887	33698
2	20		88044	AN340-C8
2	21		78189	4008-18-00
2	22		60887	69
2	23	3610-01-176-0335	60887	33703
2	24		60887	3236
2	25		60887	33257
2	26		60887	33260
2	27		60887	33269
2	28		60887	33264
2	29		60887	33253
2	30		96906	MS28775-012
2	31	3610-01-176-0321	60887	33281
2	32		78189	4010-18-00
2	33		88044	AN345-C10
2	34		60887	3095
2	35		60887	59
2	36		60887	33700
2	37		79136	5115-12
2	38		60887	407
2	39		60887	33697
3	1		60887	37173
3	1		60887	37729
3	2		96906	MS16637-19
3	3		60887	37740
3	4		60887	758044
3	5		96906	MS35691-502
3	6		88044	AN340-C10
3	7		78189	4010-18-00
3	8		88044	AN960-C416
3	9	3020-01-179-6582	60887	33953
3	10		01226	S-54B
3	11		88044	AN340-C416
3	12		96906	MS35333-60
3	13		60887	3419
3	14	3120-01-180-8022	60887	37139
3	15		60887	3215
3	15		60887	3215-1B
3	16	3130-01-185-0714	60887	47431
3	17	5330-01-180-7722	60887	33868
3	18	4520-01-181-9369	60887	33976
3	19		78189	4010-18-00
3	20		88044	AN340-C10
3	21	3610-01-176-0328	60887	33960
3	22		60887	3039
3	23		60887	33147
3	24	3610-01-176-0332	60887	33944
3	25	3610-01-176-0331	60887	33245

CROSS-REFERENCE INDEXES

FIG	ITEM	FIGURE AND ITEM NUMBER INDEX		PART NUMBER
		STOCK NUMBER	FSCM	
3	26		60887	33339
3	26	3020-01-179-6320	60887	37174
3	27		96906	MS16637-19
3	28		88044	AN960-C516
3	29		60887	400037-1
3	30		96906	MS16637-1
3	31		60887	37138
3	32		60887	3224
3	33		60887	33920
3	34		60887	409
3	35		60887	33070
3	36		60887	409
3	37		60887	33634
3	38		60887	33633
3	39		96906	MS35333-60
3	40		96906	MS16637-4
3	41		96906	MS35289-10
3	42		60887	3176
3	43		60887	33632
3	44		96906	MS16633-25
3	45		79136	5555-62
3	46		60887	2953
3	47		88044	AN515C-8-R6
3	47		88044	AN515C-8-6
3	48		00779	GR-47
3	49		88044	AN340-C8
3	50		60887	33212
3	51		60887	71
3	52		96906	MS35333-46
3	53		88044	AN340-C6
3	54		60887	33882
3	55		88044	AN515-C416-24
3	56		60887	22110-1
3	57		60887	26236-1
3	58		60887	32321-1
3	59		88044	AN340-C416
3	60		60887	30150-1
3	61		60887	33954
3	62		60887	33063
3	63	4140-01-180-9024	16327	9C946 TYPE U21
3	64		27262	1545P
3	65		27262	1190-T
3	65		27264	02-09-2101
3	66		60887	72
3	67	3610-01-176-0327	60887	33978
3	68	3610-01-176-0326	60887	33977
3	69		60887	466
3	70	3610-01-176-0329	60887	33985
3	71	6250-01-180-9025	60887	33154
3	72		60887	33851
3	73		88044	AN500-4-R8

CROSS-REFERENCE INDEXES

FIG	ITEM	FIGURE AND ITEM NUMBER INDEX		PART NUMBER
		STOCK NUMBER	FSCM	
3	74		60887	11268
3	75		60887	356
3	76		60887	253
3	77		60887	33984
3	78		60887	33831
3	79	6240-01-176-4327	60887	33026
3	80		60887	416
3	81		96906	MS51957-48
3	82		60887	3473
3	83		96906	MS35335-31
3	84		60887	33825
4	1	3610-01-176-0333	60887	33961
4	2		96906	MS16637-19
4	3		88044	AN960-C516
4	4		60887	400037
4	5		31368	404
4	6	3020-01-179-6581	60887	33950
4	7		60887	53601
4	8		60887	34696
4	9		60887	53652
4	9		60887	53837
4	10		60887	33979
4	11		00779	R10480
4	12		60887	33962
4	13		27901	63191
4	14		60887	33729
4	15		11083	G51H-B
4	16	3610-01-176-0334	60887	33667
4	17		60887	33969
4	18		60887	3230
4	19		00779	N3MTB-2
4	20		79136	5555-31-H
4	21		60887	33968
4	22		60887	53718
4	23		60887	3015
4	24		88044	AN960-816L
4	25		79136	5100-112
4	26		60887	33965
4	27		60887	3278
5	1		60887	30943
5	1	5905-01-171-7749	60887	37163
5	2	3610-01-176-2428	60887	33958
5	3		78189	3502-16-06-0551
5	4		60887	33643
5	5		94222	61-10-2-0
5	6	5930-01-176-8891	65289	261-202
5	7		60887	48807
5	8		60887	758402
5	9		60887	509
5	10		60887	524
5	11		60887	37368

CROSS-REFERENCE INDEXES

FIG	ITEM	FIGURE AND ITEM NUMBER INDEX		PART NUMBER
		STOCK NUMBER	FSCM	
5	12		78189	4006-14-00
5	13		60887	407
5	14		78189	4008-18-00
5	15		60887	253
5	16		88044	AN340-C8
5	17		28081	Z3T-00300-061
5	18		88044	AN340-C10
5	19		60887	37536
5	20		60887	3233
5	21		96906	MS35333-36
5	22		88044	AN515-C4-8
5	23		60887	33840
5	24		78179	4014-20-00
5	25		96906	MS35289-1
5	26		60887	71
5	27		60887	37162
5	28		12012	SL58UMCH
5	28		60887	37765
5	29		88044	AN515-C4-8
5	30		08863	N4-2
5	30		88044	MS35333-36
5	31		73559	TIGL51-1L-WH-FN
5	31	5930-01-176-9005	73559	TIGL51-6S-WH-NWH
5	32	3610-01-176-2423	60887	33847
5	33		96906	MS35333-42
5	34		60887	33990
5	35		56501	TY-232M
5	36		28520	SB-1500-21
5	37		60887	33957
5	38		56501	TY-232M
5	39		96906	MS35289-1
5	40		78189	4014-20-00
5	41		96906	MS35691-502
5	42		60887	37167
5	43	3610-01-176-0325	60887	37164
5	44		28520	SB-500-6
5	45		60887	59
5	46		78189	4008-18-00
5	47		88044	AN340-C8
5	48	3610-01-180-6131	60887	33854
5	49		60887	407
5	50	3610-01-180-6130	60887	33644
5	51		94222	61-10-2-0
5	52		78189	3502-16-06-0551
5	53		74048	B33948-A TYPE C
5	54		60887	33537
5	55	3610-01-176-0330	60887	33323
5	56		60887	23016-1
5	57		60887	3095
5	58		88044	AN515-C8-12
5	59		96906	MS20365-832A

CROSS-REFERENCE INDEXES

FIG	ITEM	FIGURE AND ITEM NUMBER INDEX		PART NUMBER
		STOCK NUMBER	FSCM	
5	60		78189	4008-18-00
5	61		60887	466
5	62		96906	MS20365-832A
5	63		88044	AN515-C416-16
5	64		60887	25211-1
5	65		28520	SB-1500-21
5	66		60887	240
5	67		88044	AN340-C8
5	68		60887	466
5	69		60887	11242
5	70		94222	31-10-101-11
5	71		60887	33522
5	72		88044	AN340-C416
5	73		78189	4014-20-00
5	74		60887	25213-1
5	75		60887	33087
5	76		60887	33218
5	77		60887	33917
5	78		60887	235
5	79		60887	33086
5	80		60887	33557
5	81		60887	33523
5	82		60887	33560
5	83		60887	407
5	84		60887	524
5	85		60887	3293
5	86		96906	MS15795-806
5	87		60887	3268
5	88		60887	33514
5	89		88044	AN515C4-10
5	90	5930-01-176-7217	60887	33519
5	91		60887	33515
5	92		88044	AN340-C4
5	93		60887	235
5	94		00779	2-520181-2
5	95		88044	AN515-C4-8
5	96		60887	33520
5	97		60887	33085
5	98		60887	23016-1
5	99		60887	3095
5	100		88044	AN515-C8-12
5	101		60887	3268
5	102		60887	33914
5	103		60887	33321
5	104		60887	33335
5	105		60887	33329
5	106		60887	33336
5	107		60887	3233
5	108		60887	33597
5	109		78179	4014-20-00
5	110		60887	406

CROSS-REFERENCE INDEXES

FIG	ITEM	FIGURE AND ITEM NUMBER INDEX		PART NUMBER
		STOCK NUMBER	FSCM	
5	110		96906	MS35289-1
5	111		56501	TY-232M
5	112		60887	407
5	113		59730	TC-828
5	114		56501	TY-232M
5	115		60887	407
5	116		60887	33897
5	117		60887	407
5	118		56501	TY-232M
5	119		60887	33921
5	120		60887	407
5	121		60887	33897
5	122		56501	TY-232M
5	123		60887	407
5	124		56501	TY-232M
5	125		60887	33897
5	126		96906	MS35289-5
5	127		78189	4014-20-00
5	128		60887	33255
5	129		60887	33326
5	130		60887	3061
5	131		60887	33337
6	1		81337	5-7-173
6	2		81337	5-7-174
6	3		81337	5-7-180-1
6	4		96906	MS14151-2
6	5		01570	2200-N-2
6	6		96906	MS16535-314
6	7		81337	5-7-180-2
6	8		81337	5-7-176
6	9		81337	5-7-180-3
6	10		81337	5-7-179
6	11		81337	5-7-180-4
6	12		96906	MS16535-125
6	13		96906	MS15795-804
6	14		81337	5-7-175
6	15		96906	MS51861-65C
6	16		96906	MS14151-3
6	17		96906	MS16535-309
6	18		81377	396CA
6	19		81377	396CA
6	20		01570	195-Z-2
6	21		60887	25448
6	22		60887	643
6	23		60887	33334
7	1		81337	5-7-181
7	2		81337	5-7-186
7	3		96906	MS16535-311
7	4		96906	MS14151-2
7	5		81337	5-7-185-1
7	6		01570	2200-N-2

CROSS-REFERENCE INDEXES

FIG	ITEM	FIGURE AND ITEM NUMBER INDEX		PART NUMBER
		STOCK NUMBER	FSCM	
7	7		96906	MS16535-314
7	8		81337	5-7-185-2
7	9		81337	5-7-182
7	10		96906	MS51861-65C
7	11		96906	MS14151-3
7	12		81337	5-7-182-2
7	13		96906	MS16535-309
7	14		96906	MS14151-2
7	15		96906	MS16535-307
7	16		81377	8301
7	17		81337	5-7-185-3
7	18		01570	195-Z-2
7	19		81377	396CA
7	20		81337	5-7-182-1
7	21		96906	MS20613
7	22		96906	MS15795-841
7	23		74427	43NP
7	24		81337	5-7-184
7	25		81337	5-7-184-4
7	26		23055	W333, NYLON
7	27		96906	MS16535-309
7	28		96906	MS14151-2
7	29		81337	8015
7	30		81337	5-7-184-3
7	31		81337	5-7-183
7	32		04963	4693
7	33		81337	5-7-183-2
7	34		96906	MS16535-309
7	35		96906	MS14151-2
7	36		81377	396CA
7	37		81337	5-7-183-1
7	38		60887	25448-1C
7	39		60887	643
7	40		60887	33338
8	1	3610-01-176-0338	60887	33647
8	2		60887	33649
8	2		60887	38484
8	3		60887	33648
8	4		60887	33650
8	5		60887	3303
8	5		60887	38485
8	6		60887	3334

By Order of the Secretary of the Army:

CARL E. VUONO
General United States Army
Chief of Staff

official:

WILLIAM J. MEEHAN, II
Brigadier General United States Army
The Adjutant General

DISTRIBUTION:

To be distributed in accordance with DA Form 12-25E, Unit, Direct Support and General Support Maintenance requirements for Reproduction Set, Diazo Process, (Model. 185 FL-M).



THEN. JOT DOWN THE DOPE ABOUT IT ON THIS FORM. CAREFULLY TEAR IT OUT. FOLD IT AND DROP IT IN THE MAIL!

SOMETHING WRONG WITH THIS PUBLICATION?

FROM (PRINT YOUR UNIT'S COMPLETE ADDRESS)
PFC JOHN DOE
COA, 3d ENGINEER BN
FT. LEONARD WOOD, MO 63108
 DATE SENT

PUBLICATION NUMBER
 TM 5-3610-256-24P

PUBLICATION DATE
 10 Aug 1990

PUBLICATION TITLE
 Reproduction Set,
 Diazo Process 185.FL-M

BE EXACT PIN-POINT WHERE IT IS

PAGE NO	PARA-GRAPH	FIGURE NO	TABLE NO
6	2-1 a		
B1		4-3	
125	line 20		

IN THIS SPACE TELL WHAT IS WRONG AND WHAT SHOULD BE DONE ABOUT IT:

In line 6 of paragraph 2-1a the manual states the engine has 6 cylinders. The engine on my set only has 4 cylinders. Change the manual to show 4 cylinders.

Callout 16 on figure 4-3 is pointing at a bolt. In key to figure 4-3, item 16 is called a shim - Please correct one or the other.

I ordered a gasket, item 19 on figure B-16 by NSN 2 910-00-762-3001. I got a gasket but it doesn't fit. Supply says I got what I ordered, so the NSN is wrong. Please give me a good NSN

PRINTED NAME, GRADE OR TITLE AND TELEPHONE NUMBER

JOHN DOE, PFC (268) 317-7111

SIGN HERE

JOHN DOE

TEAR ALONG PERFORATED LINE

RECOMMENDED CHANGES TO EQUIPMENT TECHNICAL PUBLICATIONS



THEN, JOT DOWN THE DOPE ABOUT IT ON THIS FORM. CAREFULLY TEAR IT OUT, FOLD IT AND DROP IT IN THE MAIL!

SOMETHING WRONG WITH THIS PUBLICATION?

FROM: (PRINT YOUR UNIT'S COMPLETE ADDRESS)

DATE SENT

PUBLICATION NUMBER
TM 5-3610-256-24P

PUBLICATION DATE
10 Aug 1990

PUBLICATION TITLE
Reproduction Set,
Diazo Process 185.FL-M

BE EXACT . . . PIN-POINT WHERE IT IS

PAGE NO	PARA-GRAPH	FIGURE NO	TABLE NO

IN THIS SPACE TELL WHAT IS WRONG AND WHAT SHOULD BE DONE ABOUT IT:

PRINTED NAME, GRADE OR TITLE, AND TELEPHONE NUMBER

SIGN HERE:

TEAR ALONG PERFORATED LINE

DA FORM 2028-2
1 JUL 79

PREVIOUS EDITIONS ARE OBSOLETE.
DRSTS-M Overprint 2, 1 Nov 80.

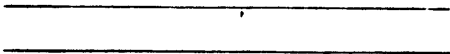
P.S.--IF YOUR OUTFIT WANTS TO KNOW ABOUT YOUR RECOMMENDATION MAKE A CARBON COPY OF THIS AND GIVE IT TO YOUR HEADQUARTERS.

FILL IN YOUR
UNIT'S ADDRESS



FOLD BACK

DEPARTMENT OF THE ARMY



OFFICIAL BUSINESS

TEAR ALONG PERFORATED LINE

The Metric System and Equivalents

Linear Measure

1 centimeter = 10 millimeters = .39 inch
 1 decimeter = 10 centimeters = 3.94 inches
 1 meter = 10 decimeters = 39.37 inches
 1 dekameter = 10 meters = 32.8 feet
 1 hectometer = 10 dekameters = 328.08 feet
 1 kilometer = 10 hectometers = 3,280.8 feet

Weights

1 centigram = 10 milligrams = .15 grain
 1 decigram = 10 centigrams = 1.54 grains
 1 gram = 10 decigrams = .035 ounce
 1 dekagram = 10 grams = .35 ounce
 1 hectogram = 10 dekagrams = 3.52 ounces
 1 kilogram = 10 hectograms = 2.2 pounds
 1 quintal = 100 kilograms = 220.46 pounds
 1 metric ton = 10 quintals = 1.1 short tons

Liquid Measure

1 centiliter = 10 milliliters = .34 fl. ounce
 1 deciliter = 10 centiliters = 3.38 fl. ounces
 1 liter = 10 deciliters = 33.81 fl. ounces
 1 dekaliter = 10 liters = 2.64 gallons
 1 hectoliter = 10 dekaliters = 26.42 gallons
 1 kiloliter = 10 hectoliters = 264.18 gallons

Square Measure

1 sq. centimeter = 100 sq. millimeters = .155 sq. inch
 1 sq. decimeter = 100 sq. centimeters = 15.5 sq. inches
 1 sq. meter (centare) = 100 sq. decimeters = 10.76 sq. feet
 1 sq. dekameter (are) = 100 sq. meters = 1,076.4 sq. feet
 1 sq. hectometer (hectare) = 100 sq. dekameters = 2.47 acres
 1 sq. kilometer = 100 sq. hectometers = .386 sq. mile

Cubic Measure

1 cu. centimeter = 1000 cu. millimeters = .06 cu. inch
 1 cu. decimeter = 1000 cu. centimeters = 61.02 cu. inches
 1 cu. meter = 1000 cu. decimeters = 35.31 cu. feet

Approximate Conversion Factors

To change	To	Multiply by	To change	To	Multiply by
inches	centimeters	2.540	ounce-inches	newton-meters	.007062
feet	meters	.305	centimeters	inches	.394
yards	meters	.914	meters	feet	3.280
miles	kilometers	1.609	meters	yards	1.094
square inches	square centimeters	6.451	kilometers	miles	.621
square feet	square meters	.093	square centimeters	square inches	.155
square yards	square meters	.836	square meters	square feet	10.764
square miles	square kilometers	2.590	square meters	square yards	1.196
acres	square hectometers	.405	square kilometers	square miles	.386
cubic feet	cubic meters	.028	square hectometers	acres	2.471
cubic yards	cubic meters	.765	cubic meters	cubic feet	35.315
fluid ounces	milliliters	29.573	cubic meters	cubic yards	1.308
pints	liters	.473	milliliters	fluid ounces	.034
quarts	liters	.946	liters	pints	2.113
gallons	liters	3.785	liters	quarts	1.057
ounces	grams	28.349	liters	gallons	.264
pounds	kilograms	.454	grams	ounces	.035
short tons	metric tons	.907	kilograms	pounds	2.205
pound-feet	newton-meters	1.356	metric tons	short tons	1.102
pound-inches	newton-meters	.11296			

Temperature (Exact)

°F	Fahrenheit temperature	5/9 (after subtracting 32)	Celsius temperature	°C
----	------------------------	----------------------------	---------------------	----

PIN: 056681-000